

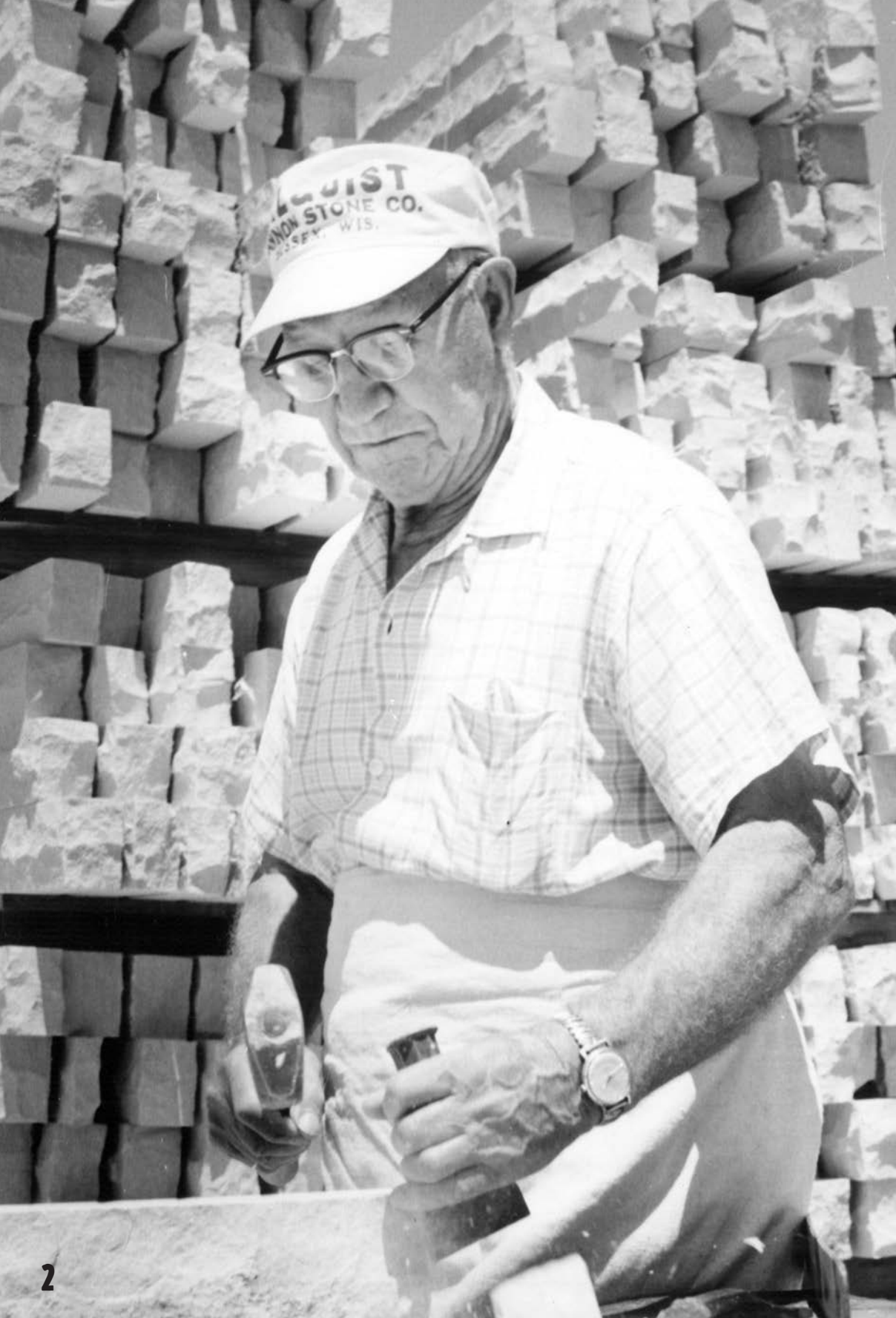
**HALQUIST**  
**S T O N E**

*Rocking America Since 1929*

WALLSTONE | PAVING | OUTCROPPING | SIGNAGE







# IT'S ABOUT THE DETAILS.

Whether it's in our showrooms, quarries or our national distribution channels, you'll find the highest quality building and landscaping stone known in the United States. Natural stone is the most versatile product available in building and landscaping, so we pay special attention to the details of your plan to ensure that the right stone is specified before the order is placed. Whether you are a homeowner, landscaper or architect, we encourage you to talk to us very early in the project to discuss the preferred stone for the application you have designed. The team of experts at Halquist can assist you with recommendations that add quality and character throughout the entire project.

The dedication to providing our customers with the best stuff made on Earth is what transcends the ordinary into a body of work that inspires the soul.

From every level of our organization we are dedicated to helping you bring your ideas to life. We invite you to visit our 8,000 square foot designer showroom along with over four-acres of outdoor displays. After you've had an opportunity to look over the many options that are available to you, we can help you take the next step in designing the home or commercial project of your dreams.

The natural depth of our cut stone, fabrication facilities, and our architectural stone expertise, enables us to supply both large and small stone projects fabricated from the finest stone known to man - commercial or residential. Plus our estimators can put your ideas or job specifications to paper with the latest drawing techniques on the latest AutoCAD software.

With quarries throughout Wisconsin, along with stone seen throughout the world, you won't find a better selection of colors and textures delivered to you in a timely fashion.





8" LANNON BUFF WALLSTONE

## FOR A RUGGED LOOK THAT BLENDS BEAUTIFULLY WITH NATURE.

With a wide variety of textures, colors and sizes, Halquist Stone allows you to express your distinctive style by transforming the ordinary into the extraordinary. A landscaping favorite, wallstone is the perfect choice for retaining walls and free-standing walls in creating an elegant and charming appearance to your home that blends beautifully with nature. The Halquist Wallstone Collection will help you play the perfect host for that upscale look, yet can express your individual style. No matter what your style is, Halquist Stone has a collection of stones to create the look you envision.





**WAUKESHA BROWN WALLSTONE  
WITH BLUESTONE COPING**



**CHILTON WEATHEREDGE WALLSTONE**



**LANNON 8-INCH  
WEATHEREDGE WALLSTONE**







### HALQUIST DESIGN TIP: #133

**How High Should I Go?** Determining the height of your retaining wall depends on the steepness of your incline. If you plan on leveling your slope one level of wall should do. Dramatic slope heights will require a series of walls terraced with garden plants or lawn. Still having trouble deciding? Let our experts help you figure it out!





**LANNON BUFF 8-INCH WALLSTONE**



**CHILTON SPLITFACE  
8-INCH WALLSTONE**



**FOND DU LAC BUFF WALLSTONE  
PUBLIC LAKEFRONT AND BEACH  
EVANSTON, ILLINOIS**





WAUKESHA BUFF



LANNON 8-INCH WALLSTONE



LANNON GREY

### HALQUIST CUT DRYWALL STONE

COVERAGE PER FACE FOOT\*

WIDTH	COVERAGE PER TON	MAX. WALL HEIGHT
4-INCHES	40 SQUARE FEET	-
8-INCHES	20 SQUARE FEET	3 FEET
12-INCHES	13 SQUARE FEET	5 FEET
18-INCHES	8 SQUARE FEET	15 FEET
24-INCHES	6 SQUARE FEET	25 FEET

\* TYPICAL MIDWESTERN APPLICATION. LOCATION SITE MAY VARY. COVERAGE FIGURED USING NATURAL HEIGHT. SAWED HEIGHT STONE COVERAGE MAY VARY.





**BEAVER CREEK | WALLSTONE**



**CHILTON SPLITFACE | WALLSTONE**



**CHILTON WEATHEREDGE | WALLSTONE**



**FOND DU LAC BUFF | WALLSTONE**



**FOND DU LAC SILVER | WALLSTONE**



**LANNON BUFF | WALLSTONE**



**LANNON GREY | WALLSTONE**



**LANNON SAWED (SHOWN IN GREY) | WALLSTONE**



**LANNON WEATHEREDGE | WALLSTONE**



**SONOMA | WALLSTONE**



**SONOMA TUMBLED | WALLSTONE**



**WAUKESHA BROWN | WALLSTONE**





**WAUKESHA BUFF** | WALLSTONE



**WINNEBAGO** | WALLSTONE



**WINNEBAGO WALLSTONE**  
WITH CHILTON STEPS



FOND DU LAC BUFF FLAGSTONE  
WITH SPLIT FIELDSTONE VENEER  
AND BEAVER CREEK COPING  
BELOIT COUNTRY CLUB | BELOIT, WISCONSIN



## NATURAL FLAGSTONE. IN HARMONY WITH NATURE.

Creating a good patio is more than a backyard retreat. It's the center of family entertainment, outdoor living and the great American cookout. Even when it threatens to rain, there's always the hope of a mad dash to the grill to feed the body and soul. There are few places where a comfortable setting is so essential. And there are few places where you have so many chances to experiment with design and color. Not all patios need to be rectangular or square. Flagstone from Halquist can be cut into geometric shapes, or you can keep the flagstone irregular for a more natural and rustic look. By following the curves of your landscape, you can create a unique framework that blends in with your house, lifestyle as in harmony with nature. Or, you can make a dramatic statement that clearly marks your gathering spot. Whatever you decide, be sure to make room for the cook.



LANNON GREY FLAGSTONE



CHILTON FLAGSTONE

GRANITE STEPPERS







CHILTON PATTERN FLAGSTONE



LANNON BUFF FLAGSTONE



FOND DU LAC BUFF FLAGSTONE





**CHILTON | FLAGSTONE**



**FOND DU LAC BUFF | FLAGSTONE**



**FOND DU LAC SILVER | FLAGSTONE**



**KODIAK | FLAGSTONE**



**LANNON BUFF | FLAGSTONE**



**LANNON GREY | FLAGSTONE**

Halquist natural cleft random flagstone makes a perfect choice for a natural patio or walkway. Most come in two size ranges:

**STEPPERS**

Considered smaller versions of flagstone, these cover up to approximately 1 to 3 square feet per piece. Available in Chilton, Fond du Lac, Silver Fond du Lac and Lannon.

**FLAGSTONE**

Full size flagstone covers approximately 4 to 10 square feet

All varieties can be custom cut into regular patterns and other sizes available.



**FOND DU LAC FLAGSTONE**  
SHOWN IN A IRREGULAR  
AND RECTANGULAR PATTERN  
WITH CHILTON CUSTOM COPING  
AND CHILTON WEATHEREDGE  
8-INCH WALLSTONE.



**LANNON BUFF FLAGSTONE**  
SHOWN IN IRREGULAR AND PATTERN PAVING.  
WEST BEND MUTUAL INSURANCE  
WEST BEND, WISCONSIN



IT'S ONE THING TO MAKE A PATIO.  
IT'S ANOTHER TO MAKE A STATEMENT.

SHOWN ABOVE  
WITH A 1/2 INCH  
JOINT

### FOND DU LAC SILVER PATTERN PAVING.

Halquist Stone has long been the leading provider of Midwestern natural pattern pavers. Our Fond du Lac Silver line of products are also available in steps, treads, wallstone, flagstone and outcropping to add character to any outdoor project.

- Available in sizes 12" x 12" up to 24" x 36"
- Natural cleft smooth finish
- 1 1/2" thick with sawed bottom for easy install
- Simple standard installation pattern
- 1/2" for nominal joint or 1/8" for butt joint
- Color ranges from light silver to dark silver
- 30,000 psi
- Low UV paving

CONVENIENT CRATE  
PACKAGING ORGANIZED  
BY SIZES



SHOWN ON THE  
LEFT WITH A 1/8"  
BUTT JOINT





SHOWN ABOVE WITH A 1/2 INCH JOINT

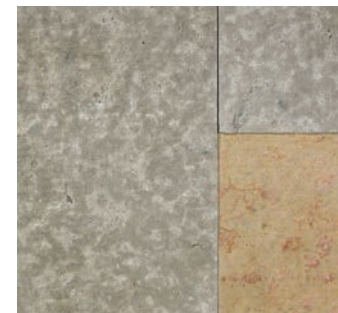


AVAILABLE IN ALL-GREY OR FULL COLOR RANGE

## BEAVER CREEK PATTERN PAVING.

Halquist Stone's Beaver Creek Pattern Paving is available in either full color or all-grey. This line of products are also available in steps, treads, wallstone and outcropping to add character to any outdoor project.

- Available in sizes 12" x 12" up to 24" x 36"
- Thermal smooth finish with sawed edge
- 1 1/2" thick with sawed bottom for easy install
- Simple standard installation pattern
- 1/2" for nominal joint or 1/8" for butt joint
- Color ranges from light buff to dark grey
- 26,260 psi
- Low UV paving



SHOWN ON THE LEFT WITH A 1/8" BUTT JOINT IN FULL COLOR





THERMAL GREYFLEK™ PEWTER  
PATTERN FLAGSTONE & POOL COPING

## YOU JUST NEEDED SOME STONE. YOU GOT AN OASIS.

If you're getting this book, it means you're thinking about changing part of your home. The experts at Halquist Stone are here to help. We want you to find the right patio, courtyard, retaining wall or whatever makes your house a better place. With any landscape project, there's a lot to think about. What does your landscape look like now? What will you keep? What will you change? How will the color and texture of your walk compliment the aesthetic value of your home? Take a closer look at natural stone from Halquist. The random sizes and colors of our paving, whether it's flagstone or our tumbled pavers, can create an atmosphere that blends in with nature. That's something that can't be achieved with man-made materials.



**CUSTOM GERMANTOWN PAVERS**  
WITH MIXED GREY AND BUFF



**THERMAL GREYFLEK PEWTER PATTERN FLAGSTONE**  
WHISTLING STRAITS GOLF CLUB  
KOHLER, WISCONSIN



**COLONIAL PAVERS**  
WITH GERMANTOWN PAVER  
BORDER



**TEMPLETON PAVERS**  
WITH THERMAL AND  
TUMBLED FINISH  
NAGAREYMA, JAPAN







**COLONIAL PAVERS** | PAVERS



**GERMANTOWN BUFF** | PAVERS



**GERMANTOWN GREY** | PAVERS



**TEMPLETON PAVERS** | PAVERS



**BEAVER CREEK FULL COLOR** | PATTERN PAVING



**BEAVER CREEK GREY** | PATTERN PAVING



**FOND DU LAC SILVER** | PATTERN PAVING

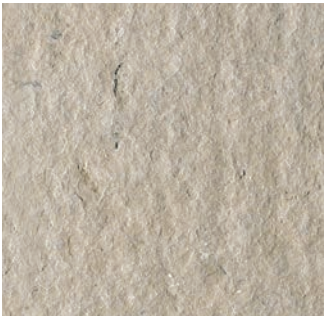


**GREYFLEK™ PEWTER** | PATTERN PAVING

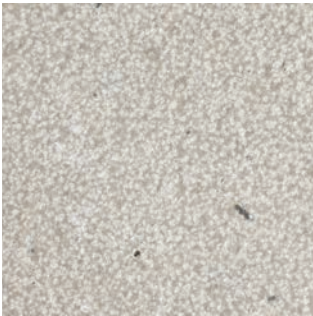


**18 SONOMA NATURAL** | PATTERN PAVING

**AVAILABLE PAVING FINISHES FOR PATTERN PAVING**



THERMAL



BUSHHAMMERED



SANDBLASTED





## BLUESTONE. NATURALLY ELEGANT AND REFINED.

Halquist wants to help you bring the natural beauty of Bluestone into your home and garden. Bluestone is a beautiful material, which offers a contemporary natural palette of grey, blue and charcoal tones. It's also a favorite of landscape architects and designers. You will often find Bluestone paving is available in irregular or pattern paving with finishes such as natural cleft, thermal and tumbled. As well as offering superior cosmetic qualities, Bluestone's exemplary resistance to the elements as well as its durable non-slip surface make it the perfect material for use inside and outside the home.





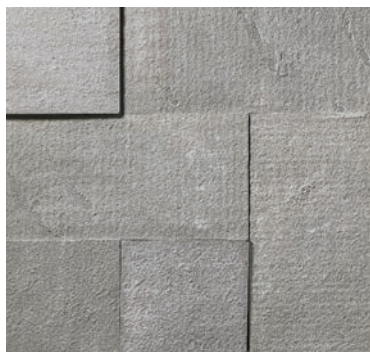
**BLUE BLUE NATURAL CLEFT | BLUESTONE**



**SAWED & TUMBLED | BLUESTONE**



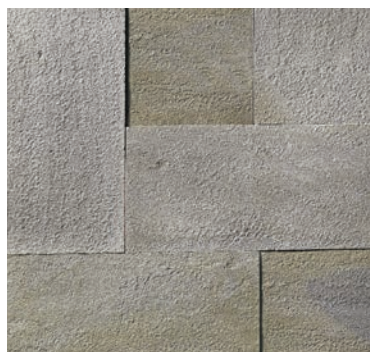
**BLUE ICE | BLUESTONE**



**BLUE BLUE THERMAL | BLUESTONE**



**LILAC | BLUESTONE**



**FULL COLOR THERMAL | BLUESTONE**




**FULL COLOR NATURAL | BLUESTONE**



**FULL COLOR BLUESTONE  
WITH BLUE MESA CUT STONE  
COUNTERTOP**





FOND DU LAC STEPS  
WITH IDEAL 4-INCH VENEER  
AND LANNON WEATHEREDGE  
AND SPLITFACE WALLSTONE



## THE FOUNDATION FOR A MAJESTIC SETTING WITH AN AGED APPEARANCE.

Ever wonder why everyone compares themselves to the beautiful look of natural stone? It's just a texture, appearance and feel that you can't duplicate with concrete. Halquist's **Step Collection** gives you a rugged look for a free flowing natural staircase, while our cut steps are ideal for a formal, sophisticated setting. They are also the perfect compliment to gardens, walkways, patios, outdoor kitchens and more. Offered in a variety of finishes such as bushhammered, natural cleft, thermal or sandblasted. Natural stone steps provides a time-honed appearance reminiscent of the gardens of Old Europe.





**LANNON BUFF PARK STEPS**



**GRANITE FIELDSTONE  
STEPS WITH  
GRANITE BOULDERS**



**CHILTON WEATHEREDGE STEPS  
WITH CHILTON WALLSTONE**



**BLUESTONE STEPS  
WITH SPLITFACE EDGE**





**LANNON NATURAL TOP RADIUS COPING  
AND STEPS WITH ROCKFACED EDGES**



**FOND DU LAC SILVER  
WITH ROCKFACED EDGES**



**BIRMINGHAM BUFF STEPS  
WITH ROCKFACED EDGES**



**LANNON STEPS  
WITH ROCKFACED EDGES**



**SONOMA STEPS**





**BIRMINGHAM** | STEPS & TREADS



**BLUESTONE\*** | STEPS & TREADS



**CHILTON** | STEPS & TREADS



**FOND DU LAC BUFF** | STEPS & TREADS



**FOND DU LAC SILVER** | STEPS & TREADS



**LANNON "PARK"** (SHOWN IN BUFF) | STEPS & TREADS



**LANNON** | STEPS & TREADS



**SAVANNAH** | STEPS & TREADS



**SONOMA NATURAL** | STEPS & TREADS





**SONOMA THERMAL | STEPS & TREADS**



**WAUKESHA BUFF | STEPS & TREADS**



**WAUKESHA BROWN | STEPS & TREADS**



**WAUKESHA BUFF STEPS**

**Steps And Treads** from Halquist can add variety and create interest in your home's landscape. They are also the perfect compliment to gardens, walkways, patios, outdoor kitchens and more. Offered in both a variety of finishes such as bushhammered, natural cleft, thermal or sandblasted.

Natural stone steps provides a time-honed appearance reminiscent of the gardens of Old Europe.







LANNON OUTCROPPING  
MIX OF BUFF AND WEATHEREDGE  
UNIVERSITY OF CHICAGO  
CHICAGO, ILLINOIS

## MAKE A SOLID STATEMENT BY ANCHORING YOUR DESIGN WITH OUTCROPPING.

A popular landscape feature with many homeowners and landscape architects is the application of large heavy natural stone slabs to create an outcropping effect. This type of stone can be used on a hill or bank with a gentle or rolling slope, where the large stone slabs are fitted, and tucked into the earth to appear as if the stone was a 'natural' occurrence. Unlock the beauty and grandeur of nature in your outdoor setting with Halquist Stone's **Outcropping Collection**. Sizes range from 30" to 72" long, a thickness of 6" to 24" and widths that range from 24" to 48".





**FOND DU LAC BUFF  
OUTCROPPING**



**LANNON OUTCROPPING  
MIX OF BUFF AND WEATHEREDGE**



**FOND DU LAC SILVER  
OUTCROPPING TREADS**



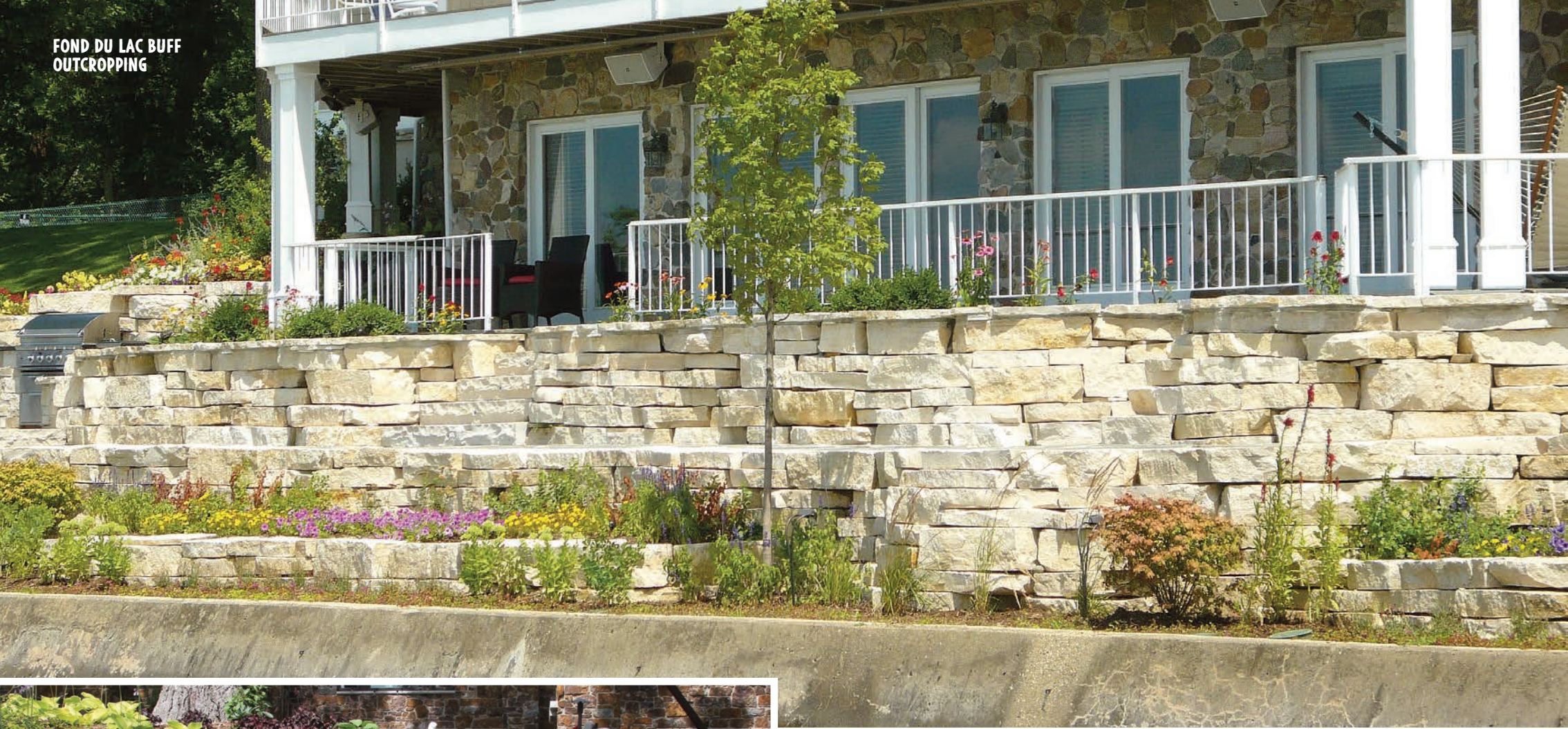
**BEAVER CREEK  
OUTCROPPING**



**HOLEY BOULDER OUTCROPPING**



**FOND DU LAC BUFF  
OUTCROPPING**



**CHILTON WEATHEREDGE  
OUTCROPPING WITH TREADS**

**WINNEBAGO OUTCROPPING  
MEDICAL COLLEGE OF WISCONSIN  
MILWAUKEE, WISCONSIN**





### HALQUIST **MATH TIP: #67**

How Do I Determine The Weight?

Length x Width x Thickness ÷ 1728 X 170\*

\*Average weight of Halquist Fond du Lac and  
Chilton outcropping is 170 lbs per cubic foot.

Lannon is 171 lbs per cubic foot.

Measurements are using inches.





**BEAVER CREEK | OUTCROPPING**



**CHILTON SPLITFACE | OUTCROPPING**



**CHILTON WEATHEREDGE | OUTCROPPING**



**FOND DU LAC BUFF | OUTCROPPING**



**FOND DU LAC SILVER | WALLSTONE**



**HOLEY BOULDERS | OUTCROPPING**





**LANNON** (AVAILABLE IN BUFF OR GREY) | OUTCROPPING



**LANNON WEATHEREDGE** | OUTCROPPING



**WINNEBAGO** | OUTCROPPING



Scan this QR Code with your phone or tablet for all your resources on stone!



## LOOKING FOR EVEN MORE IDEAS?

Whether you're on the go or at home, visit us at [halquiststone.com](http://halquiststone.com) for the latest videos and an ever changing photo gallery.

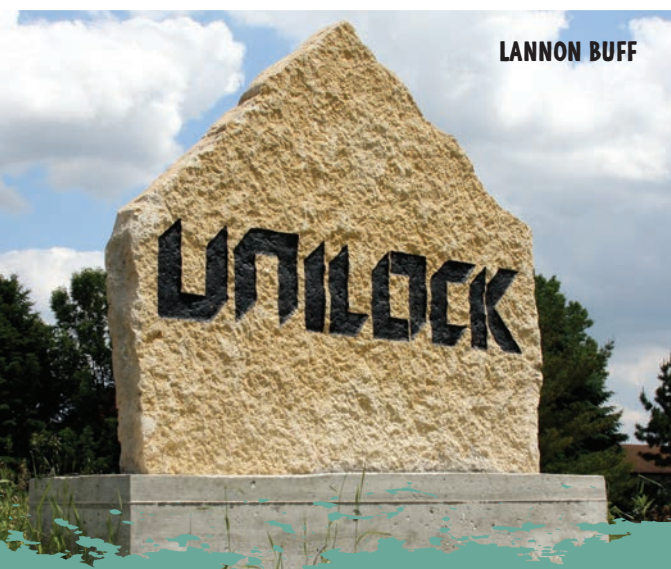
**INNOVATIVE.  
DISTINCTIVE.  
INSPIRING.**

Highest quality. Most recognized. Most used. Whatever the category, Halquist Stone dominates. It's clear we know stone, but we also know it takes more than a solid reputation to remain an industry leader. It takes quality products, state-of-the-art equipment and creative solutions - all of which we offer, and everything that makes our stone stand apart.

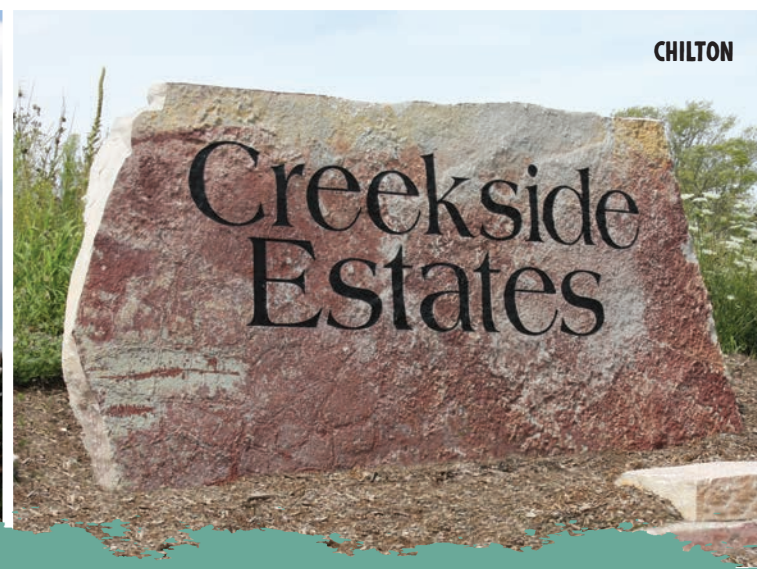
So take a look around. We're confident you'll discover why we've been Rocking America Since 1929.

**HALQUIST**  
STONE

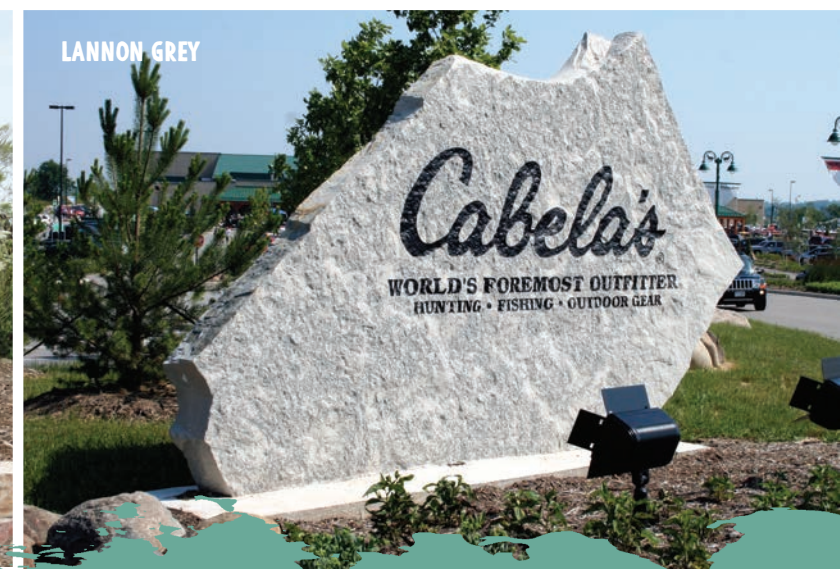




LANNON BUFF



CHILTON



LANNON GREY

## ISN'T IT TIME YOUR SIGNAGE STAND OUT FROM THE ORDINARY?

In today's world, you must grab someone's attention at a moments notice. Using creative outcropping signage from Halquist Stone can help your project stand out from the crowd. Whether you're in need of a sign for an entrance of a neighborhood subdivision, a corporate office or even a retail store, Halquist has a wide variety of colors, sizes and shapes to meet your needs. We will take your logo and sandblast it with custom paint that will last for years to come.



LANNON BUFF



LANNON GREY



LANNON BUFF



LANNON GREY



GRANITE BOULDER





## BROADEN YOUR DESIGN HORIZONS WITH ARCHITECTURAL DETAILS.

As **one of the largest fabricators of cut stone in the Midwest**, Halquist combines modern technology with traditional craftsmanship to bring your unique vision to reality. In addition to traditional limestone material, Halquist sources material from a variety of quarries. This allows a broad range of limestones, as well as sandstone, dolomite and granite. We offer architects, builders, landscapers and homeowners a versatility that is unmatched by any other fabricator of cut stone. With Halquist's wide selection of colors, grades and sizes, we assure that all aesthetic requirements of the most demanding projects are met. Our old world craftsmanship with state-of-the-art 3, 4 and 5 axis CNC machines and excellence in customer service match the broad range of colors and grades of stone that are available.





**INDIANA LIMESTONE COPING  
WITH COLONIAL VENEER**



**LANNON COPING  
AND CUSTOM WATERFALL**



**BIRMINGHAM BUFF  
WITH CHILTON FULL COLOR VENEER**



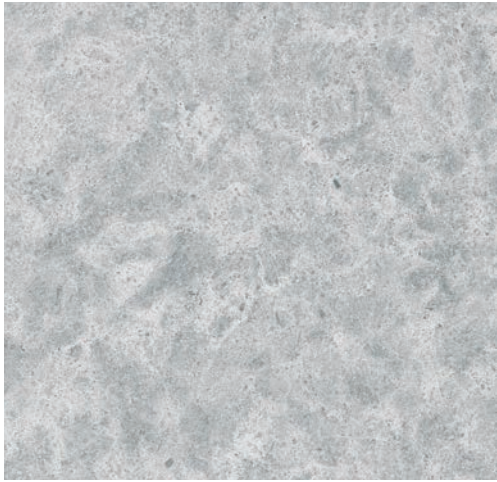
**ODESSA CUT STONE  
WITH ROCKFACED EDGES**



**INDIANA LIMESTONE BALUSTERS  
AND CUSTOM COPING**







**ALEUTIAN MARBLE | CUT STONE**

PO HO BR BU SB EC



**BENGAL | CUT STONE**

PO HO BR BU SB EC



**BIRMINGHAM BUFF | CUT STONE**

TH PO HO BR BU SB EC



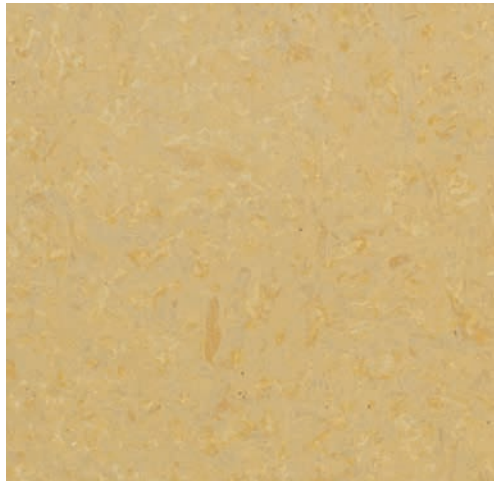
**BLUE MESA | CUT STONE**

TH HO BR BU SB EC



**HAZELWOOD | CUT STONE**

TH PO HO BR BU SB EC



**HUDSON VALLEY | CUT STONE**

TH HO BR BU SB EC



**INDIANA BUFF | CUT STONE**

PO HO BR BU SB EC



**INDIANA GREY | CUT STONE**

PO HO BR BU SB EC



**KINGSFORD | CUT STONE**

HO BR BU SB EC



**LISBON BIANCO | CUT STONE**

PO HO BR BU SB



**ODESSA | CUT STONE**

PO HO BR BU SB EC



**PEWTER LANNON | CUT STONE**

TH PO HO BR BU SB EC





**PROVINCIAL BEIGE | CUT STONE**  
 PO HO BR BU SB



**TEXAS CREME | CUT STONE**  
 HO BR BU SB



**TUXEDO GREY | CUT STONE**  
 TH PO HO BR BU SB EC

# PILLAR CAPS & MORE.

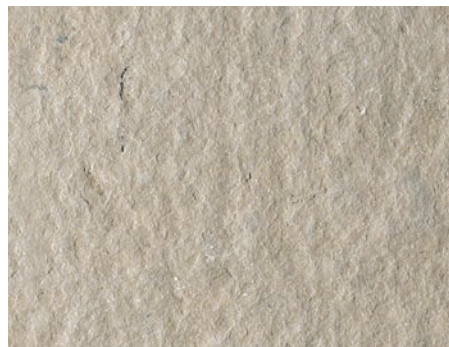
It's time to start thinking outside the block! Natural stone from Halquist has unlimited design potential. Whether it's a simple cap for a pillar, seatwall or coping for a fire pit to a large custom outdoor dining table, let your imagination run wild and let our experts help bring it to life.

**LEGEND KEY.** BELOW ARE THE FINISH CAPABILITIES OF EACH STONE PROFILE

- TH** THERMAL
- PO** POLISHED
- HO** HONED
- BR** BRUSHED
- BU** BUSHHAMMERED
- SB** SANDBLASTED
- EC** EXTERIOR COPING

## AMERICA'S MOST POPULAR FINISHES

SHOWN IN PEWTER



THERMAL



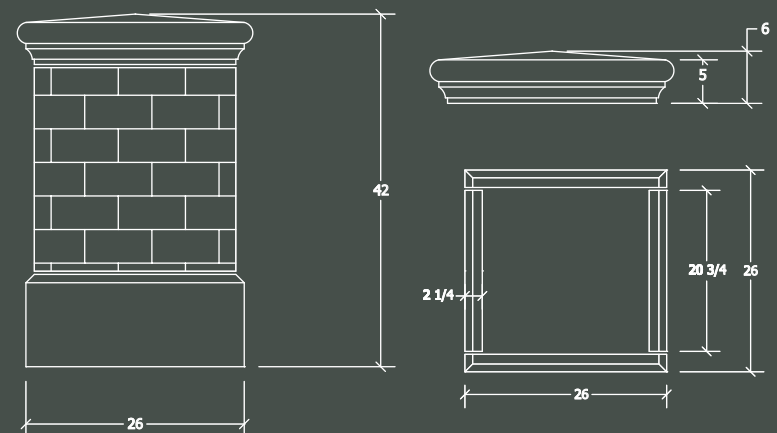
BUSHHAMMERED



SANDBLASTED

# DESIGN ASSISTANCE

The natural depth of our cut stone, fabrication facilities and our architectural stone expertise, enables us to supply both large and small stone projects - commercial or residential. If you demand the best, we invite you to bring your dreams and imagination to our professionals. Our estimating department will put them to paper using the latest version of AutoCAD and drawing techniques. Once approved, we will bring it to reality with the latest CNC technology and old world craftsmanship so that it can be marveled for generations to come.





# ISN'T IT TIME YOU GOT INSPIRED?

## HERE'S SEVEN SIMPLE WAYS...

Sometimes we tend to over-analyze some of the most simplest things in life. And being creative can be challenging for some for that exact reason. What inspires you? What pushes your imagination button? While the below suggestions might not be answers that a rocket scientist would give you, they are simple and effective.

- 1** Ask a child what he or she would do.
- 2** Look through a book on pop art.
- 3** Think of your favorite place on Earth, and break it down mentally into blocks of color.
- 4** Draw - even if you think you're bad at it.
- 5** Spend one hour listening to music through a headset
- 6** Buy a coloring book and crayons - then color outside of the lines.
- 7** Make a color copy of a picture or painting. Then tear it up into squares and then reassemble it.

Halquist Stone collects and sorts some of the most beautiful granite and glaciated limestone boulders that are perfect for any job.

HALQUIST FIELDSTONE		
SIZE RANGE	COVERAGE PER TON	APPROX. WEIGHT
3 TO 6 INCHES	50 TO 55 SQUARE FEET	30 LBS.
4 TO 8 INCHES*	35 TO 40 SQUARE FEET	60 LBS.
6 TO 12 INCHES	20 TO 25 SQUARE FEET	120 LBS.
12 TO 18 INCHES	10 TO 15 SQUARE FEET	400 LBS.
18 TO 25 INCHES	7 TO 8 SQUARE FEET	950 LBS.

BASED ON ONE LAYER THICK AND WEIGHT IS PER PIECE



MIX OF FIELDSTONE AND BIRCHWOOD BOULDERS WITH LANNON OUTCROPPING



FENCELINE FIELDSTONE BOULDERS WITH BROOKFIELD VENEER ON HOME



GRANITE FIELDSTONE





FIRE PIT SHOWN IN  
LANNON GREY WITH  
BLUESTONE COPING



LANNON COBBLES

## NATURAL FIRE PIT KITS

Install a cozy fire pit during the day. Spend a romantic date night at home. Forget the typical concrete block from the big box. Nothing compares to the beauty and durability of natural stone that will allow you to enjoy it season after season for years to come. Our natural stone fire pit kits are available in Lannon, Fond du Lac, Chilton and Waukesha color pallets. Choose from three different sizes: 30-inch kit, 48-inch kit and a 60-inch kit.



## EDGING FOR PLANTS

Forget that plastic edging or that big box concrete thing. Natural stone allows your planting beds to blend in with nature rather than sticking out like a sore thumb.

Border edging from Halquist is typically 4-inches thick by 4-inches wide with random lengths. It's Available in Chilton, Fond du Lac, and Lannon.



CHILTON QUARRY

## 100% REUSED.

Did you know every American will need 1.18 million pounds of stone, sand and gravel in their lifetime?

Halquist Stone helps protect the environment from those demands by processing our manufacturing scraps. This material waste is processed into crushed aggregate, which may be used for the manufacture of concrete, asphalt, or road base products - all of which can continually be reused.

In addition, we can finely crush the stone into a powder called Aglime to fertilize the land that feeds the world.



PROUD MEMBERS OF THESE FINE ORGANIZATIONS



Because natural stone is made from nature, variations should and can be expected. Even though colors in this brochure are as close to the actual blend as possible, photographic and printing techniques - and actual viewing conditions - can alter perception of color.

**800.255.8811 | [halquiststone.com](http://halquiststone.com)**

ONLINE RESOURCES



**HALQUIST**  
**S T O N E**

**CONTACT:**

N51 W23563 Lisbon Road, PO Box 308 | Sussex, WI 53089

Voice (262) 246-9000 | Fax (262) 246-5735

Interstate (800) 255-8811 | Wisconsin (800) 255-9955

Website: [www.halquiststone.com](http://www.halquiststone.com)