



Rocking America Since 1929

HALQUIST
S T O N E



ROCKING AMERICA SINCE 1929

IN 1929 SWEDISH IMMIGRANT JOHN HALQUIST PURCHASED A 2-ACRE CURBING QUARRY JUST OUTSIDE OF SUSSEX, WISCONSIN. BY THE END OF WORLD WAR II, JOHN GREW THE SMALL QUARRY, WITH THE HELP OF HIS SON ALBIN, INTO WHAT IS NOW ONE OF THE LARGEST BUILDING STONE COMPANIES IN THE UNITED STATES.

HALQUIST SOON REALIZED THAT LANNON STONE, QUARRIED IN THE AREA SINCE THE 1850S, HAD A GOOD REPUTATION FOR YIELDING HIGH QUALITY LIME, CURBING, PAVING, FOUNDATION AND BUILDING STONE. THIS REPUTATION ALLOWED THE COMPANY TO ENJOY THE POSTWAR BUILDING BOOM, AND LANNON STONE BECAME THE PREDOMINATELY USED MATERIAL FOR HOUSES AND CHURCHES IN MILWAUKEE, CHICAGO AND THE NORTHERN MIDWEST. OVER THE YEARS HALQUIST STONE BECAME THE INNOVATORS IN THE INDUSTRY WITH MANY FIRSTS. WE WERE THE FIRST TO USE DIAMOND SAWS AND STONE SPLITTERS, FIRST IN TUMBLING STONE AND MAKING THINSTONE. HALQUIST WAS ALSO THE FIRST TO LOCALLY MARKET STONE FROM AROUND THE COUNTRY AND ONE OF THE FIRST PRODUCERS TO RECYCLE ITS WASTE INTO AGRICULTURAL LIME AND CRUSHED STONE. THIS LAID THE FOUNDATION FOR WHAT WAS A SUCCESSFUL AGGREGATE BUSINESS.

IN THE LATE 1990S WE ADDED ADDITIONAL CAPACITY WITH OUR CHILTON AND FOND DU LAC QUARRIES AND IN 2014 WE PURCHASED OUR FOND DU LAC SILVER QUARRY. THIS ENABLED US TO PROVIDE UNIQUE COLORS AND TEXTURES TO OUR PRODUCT LINE THAT WAS NOT COMMONLY FOUND IN NATURAL STONE.

TODAY WE HAVE THE INDUSTRY'S MOST ADVANCED FABRICATING EQUIPMENT, INCLUDING STATE-OF-THE-ART 3, 4 AND 5-AXIS CNC MACHINES.

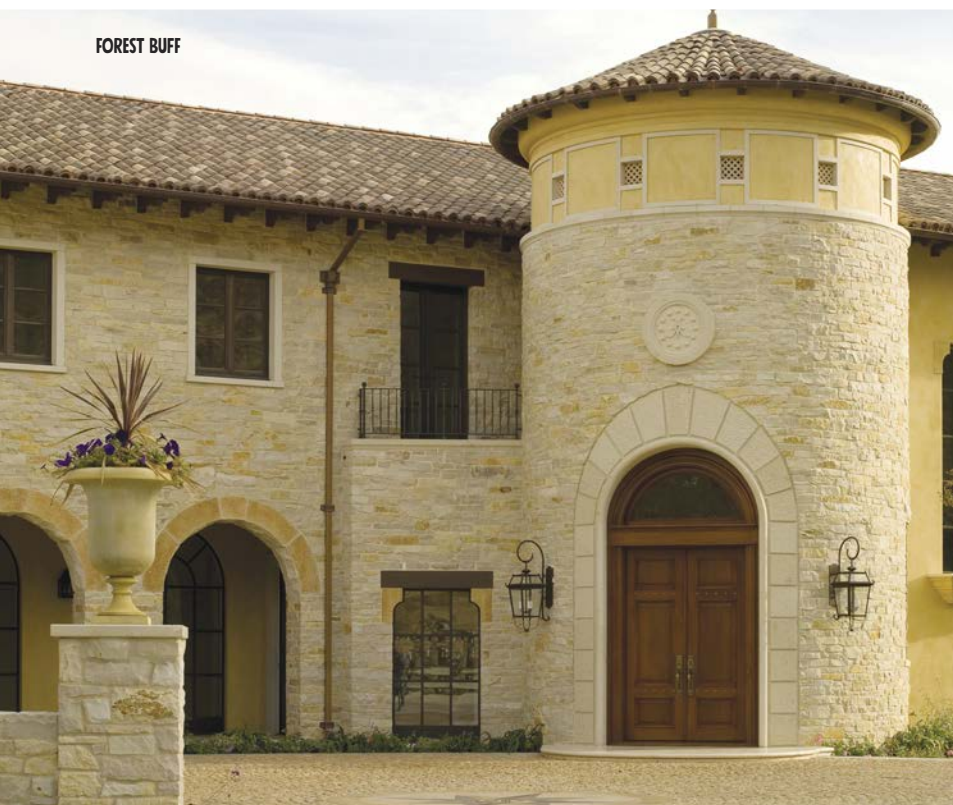
WHETHER IT'S IN OUR SHOWROOMS, QUARRIES OR OUR NATIONAL DISTRIBUTION CHANNELS YOU'LL FIND THE HIGHEST QUALITY BUILDING AND LANDSCAPING STONE KNOWN TO MANKIND. BECAUSE NATURAL STONE MAY BE THE MOST VERSATILE PRODUCT AVAILABLE IN BUILDING AND LANDSCAPING, WE PAY SPECIAL ATTENTION TO THE DETAILS OF YOUR PLAN TO ENSURE THAT THE RIGHT STONE IS SPECIFIED BEFORE THE ORDER IS PLACED. WHETHER YOU ARE A HOMEOWNER, BUILDER OR ARCHITECT, WE ENCOURAGE YOU TO TALK TO US VERY EARLY IN THE PROJECT TO DISCUSS THE PREFERRED STONE FOR THE APPLICATION YOU HAVE DESIGNED. THE TEAM OF EXPERTS AT HALQUIST CAN ASSIST YOU WITH RECOMMENDATIONS THAT ADD QUALITY AND CHARACTER THROUGHOUT THE ENTIRE PROJECT.

THE SPIRIT OF INNOVATION AND CUSTOMER SERVICE STILL REMAINS TODAY AS IT DID IN 1929. AT EVERY LEVEL OF OUR ORGANIZATION WE UNDERSTAND THAT CUSTOMER SERVICE IS JOB #1. THAT'S WHY AS A HOMEOWNER, LANDSCAPER, ARCHITECT, MASON, OR A QUALITY HOME BUILDER YOU CAN REST ASSURE THAT WE WILL DO EVERYTHING IN OUR POWER TO GAIN YOUR TRUST AS YOUR #1 SOURCE FOR ALL YOUR STONE NEEDS.



Inspiration from stone.

FOREST BUFF



DIMENSIONAL CHALET GREY

THE NATURAL FACES OF STONE.

HALQUIST STONE'S VENEER COLLECTION IS DESIGNED TO COMPLIMENT A WIDE VARIETY OF ARCHITECTURAL STYLES. WHETHER YOU'RE CREATING A SLEEK, MODERN STONE ACCENT WALL IN A BATHROOM TO A MORE TRADITIONAL FIREPLACE IN THE LIVING ROOM, WE HAVE SOME OF THE MOST DESIRED COLORS AND TEXTURES TO CHOOSE FROM.

MOST OF HALQUIST STONE'S VENEER COLLECTION COMES FROM THE FAMOUS NIAGARA DOLOMITE, WITH LAYERS TYPICALLY RANGING FROM 1" THICK TO 24" THICK. HOW WE USE THOSE LAYERS - FOR SIZE, TEXTURE AND COLOR - GIVE THE UNIQUE LOOK THAT HAVE BEEN USED FOR CENTURIES. THE SURFACE COLORS OF ALL NIAGARA DOLOMITES DERIVE FROM NATURAL IRON OXIDES, WHICH LEAVE COLORS THAT BLEND WITH LOCAL SOILS TO LEAVE A UNIQUE LOOK ON EACH STONE. CHEMICAL IRON OXIDES ARE THE TYPICAL BASE MATERIAL FOR COLORING CONCRETE, BUT WITH OUR STONE BEING OVER 390 MILLION YEARS OLD, YOU HAVE A LOOK AND DURABILITY THAT NO MANUFACTURER CAN REPRODUCE.

SPLITFACE.

STONE THAT HAS BEEN BROKEN BY A HYDRAULIC SPLITTER TO A SPECIFIC SIZE.

SEAMFACE.

A VERTICAL CRACK IN THE QUARRY THAT IS EXPOSED TO THE ELEMENTS, OFTEN SHOWING COLORATION. THIS COLORATION IS THE EDGE OF THE STONE.

WEATHEREDGE.

THIS IS AN ALTERATION BY EITHER A NATURAL CHEMICAL OR PROCESSES DUE TO THE ACTION OF ATMOSPHERIC CONDITIONS, SURFACE WATERS, SOIL AND OTHER GROUND WATERS, ALONG WITH TEMPERATURE CHANGES. THE STONE FEATURES MORE OF A GROOVED OR TEXTURED FACE.

BEDFACE.

THE NATURAL TOP OR BOTTOM OF A LAYERED STONE = A FLAGSTONE FACE. IT'S ALSO CALLED NATURAL CLEFT.

ROCKFACE.

DONE BY HAND WITH A CHIPPING TOOL, ROCK FACE STONE IS CHIPPED AROUND THE PERIMETER TO PRODUCE A BOLD, CONVEX PROJECTION ALONG ITS FACE. THIS FINISH CREATES A MORE MASSIVE APPEARANCE THAN SPLIT FACE.



SPLITFACE



SEAMFACE



WEATHEREDGE



BEDFACE



ROCKFACE

GROUT TECHNIQUES.

THROUGHOUT THIS ENTIRE BROCHURE OUR STONE COLOR PROFILES ARE SHOWN WITHOUT GROUT JOINTS AS WE FOCUS MORE ON THE BEAUTY AND COLOR OF THE STONE. WE DO THIS BECAUSE GROUT - AND SOMETIMES THE LACK OF IT - HAS AN AMAZING IMPACT ON THE LOOK OF THE FINAL PRODUCT. ALL SQUARE FOOTAGE OF OUR PRODUCT IS BASED ON A 3/4 INCH AVERAGE JOINT.

THERE ARE THREE FACTORS THAT ARE VERY IMPORTANT IN STONE MASONRY:

- 1] SELECTING THE RIGHT STONE FOR THE PROJECT
- 2] SELECTING A GOOD MASON
- 3] SELECTING AN APPROPRIATE GROUT TECHNIQUE

THREE COMMON GROUT TECHNIQUES THAT MASONS CAN DO ARE:

RAKED JOINT. ALSO KNOWN AS A STANDARD JOINT IS ACHIEVED BY LAYING EACH STONE ROUGHLY ONE FINGER WIDTH APART FROM EACH OTHER, THEN GROUTING BETWEEN EACH STONE. ONCE THE MORTAR IS SEMI-DRY, IT'S "RAKED" WITH A VARIETY OF MASONRY TOOLS TO ULTIMATELY ACHIEVE A CONSISTENT DEPTH. THIS ALLOWS THE EDGE OF EACH STONE TO BE SEEN.

FLUSH OR BRUSHED JOINT. A FLUSH JOINT IS WHEN A TROWEL IS HELD FLAT AGAINST THE STONE OR BRICK AND MOVED ALONG THE SURFACE, SO AS TO CUT AWAY THE EXCESS MORTAR. THE RESULTING JOINT IS FLUSH WITH THE STONE.

OVERGROUT JOINT. WHEN YOU COMPARE THIS IN THE PHOTOGRAPHS TO THE RIGHT YOU'LL NOTICE HOW DIFFERENT THE STONE LOOKS. THE WAY THE GROUT IS APPLIED TENDS TO GIVE THE STONE A RUSTIC AND AGED APPEARANCE. THE JOINTS ARE WIDENING, DRY IRREGULAR AND OVERLAPS THE FACE OF THE STONE.

COLORLED GROUT. DIFFERENT COLORS OF GROUT CAN ALSO CHANGE THE IMPACT OF THE STONE. ALL THE STONE PANELS TO THE RIGHT ARE SHOWN WITH STANDARD GRAY MORTAR. MORTAR COLORS ARE ALMOST UNLIMITED.

YOU MAY WISH TO HAVE YOUR MASON MAKE A MOCK-UP OF THE GROUT TECHNIQUES YOU WISH TO USE PRIOR TO BEGINNING THE ACTUAL INSTALLATION AND THAT YOU UNDERSTAND HOW THE STONE WILL LOOK ON A LARGER SCALE.



RAKED JOINT



FLUSH JOINT



OVERGROUT JOINT

NOTE: ALL STONE SWATCHES IN THIS CATALOG ARE SHOWN WITH NO JOINT DUE TO SIZE LIMITATION WITH THE PANELS. PLEASE CONSULT WITH YOUR ARCHITECT AND DESIGNER FOR BEST GROUT FOR EACH BLEND.



LEDGESTONE COLLECTION

USING HALQUIST NATURAL STONE PRESENTS AN AUTHENTIC IMAGE TO OTHERS AND CULTIVATES A DEEPER FORM OF INTEGRITY. NATURE MAKES NO EXCUSES, PUTS ON NO DISGUISES, HIDES ABSOLUTELY NOTHING, AND NEVER SETTLES FOR LESS THAN THE REAL THING. AND ONLY NATURAL STONE CAN MAKE THESE CLAIMS. THE LEDGE COLLECTION FROM HALQUIST IS ONE OF OUR MOST POPULAR RANDOM ASHLAR SHAPED PROFILES FOR THIS EXACT REASON.

THE AGELESS BEAUTY OF NATURAL STONE IS EXEMPLIFIED WITH THE LEDGE COLLECTION. THIS COLLECTION OFFERS BLENDS OF WEATHERED, SEAMFACE AND SPLITFACE STONE WHICH WILL DETERMINE SIZE, TEXTURE AND COLOR. DEPENDING ON HOW IT IS INSTALLED, YOU CAN VARY THE FINAL LOOK OF YOUR PROJECT.







CASCADE



HARBOR GREY



CHILTON RED



BROOKFIELD GREY WITH JUMPERS



NOTE: ALL STONE SWATCHES IN THIS CATALOG ARE SHOWN WITH NO JOINT TO SHOW THE STONE COLOR ONLY. PLEASE CONSULT WITH YOUR ARCHITECT AND DESIGNER FOR BEST GROUT FOR EACH BLEND.



ASHEVILLE | LEDGE



AUBURN LEDGE | LEDGE



BASSWOOD BUFF | LEDGE



BASSWOOD GREY | LEDGE



BEECHWOOD FULL COLOR | LEDGE



BEAVER CREEK LEDGE | LEDGE



BLACK FOREST | LEDGE



BRECKENRIDGE | LEDGE



BROOKFIELD BUFF | LEDGE



BROOKFIELD BUFF JUMPERS | LEDGE



BROOKFIELD FULL COLOR | LEDGE



BROOKFIELD FULL COLOR JUMPERS | LEDGE



BROOKFIELD GREY | LEDGE



BROOKFIELD GREY JUMPERS | LEDGE



CASCADE | LEDGE



CHARCOAL LEDGE | LEDGE



CHARCOAL WEATHEREDGE | LEDGE



CHILTON BROWN | LEDGE



CHILTON COBBLEFIELD | LEDGE



CHILTON FULL COLOR | LEDGE



CHILTON LEDGE | LEDGE



CHILTON RED | LEDGE



CHILTON STRATIFIED | LEDGE



COVINGTON | LEDGE



DUSTIN | LEDGE



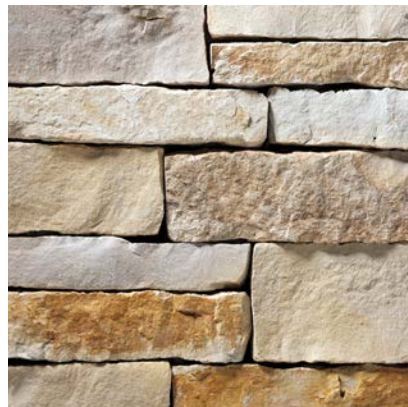
FOND DU LAC COBBLEFIELD | LEDGE



FOND DU LAC LEDGE | LEDGE



FOND DU LAC RUSTIC | LEDGE



FOREST | LEDGE



HARBOR GREY | LEDGE



MAPLE RIDGE | LEDGE



MAPLE RIDGE BROWN | LEDGE



MAYVILLE BUFF | LEDGE



MAYVILLE SILVER | LEDGE



RIVENDALE | LEDGE



SILVER COBBLEFIELD | LEDGE



SILVERLEDGE | LEDGE



SILVER BUFF | LEDGE



STAFFORD | LEDGE



SYCAMORE | LEDGE



TAMARACK | LEDGE



TUMBLED BROOKFIELD | LEDGE



TUMBLED CHILTON COBBLEFIELD | LEDGE



TUMBLED CHILTON LEDGE | LEDGE



TUMBLED SILVERLEDGE | LEDGE



WHISTLING HILL | LEDGE



WINDRUSH | LEDGE



BASSWOOD GREY



CHILTON FULL COLOR



MAPLE RIDGE BROWN



MOSAIC COLLECTION

THROUGH OUT HISTORY, NATURAL STONE HAS BEEN THE PREMIER BUILDING MATERIAL. ITS' TIMELESS ELEGANCE AND LASTING DURABILITY HAS MADE IT IDEAL IN COUNTLESS APPLICATIONS. BUILDING NATURALLY MEANS USING PURE STONE IN ALL YOUR APPLICATIONS AND NEVER SETTLING FOR LESS THAN AUTHENTICITY.

THE MOSAIC COLLECTION FROM HALQUIST STONE IS A STYLE OF STONES THAT ARE VERY RUGGED AND IRREGULAR. THE RANDOM SHAPES AND SIZES OF THESE ROUGH-EDGE STONES CREATE EXCITING PATTERNS FOR BOTH CONTEMPORARY AND RUSTIC CLASSICS.

TUMBLER VICTORIA



STOCKBRIDGE



MOSSY MOUNTAIN
SHOWN IN WEB WALL



ASHFORD



NOTE: ALL STONE SWATCHES IN THIS CATALOG ARE SHOWN WITH NO JOINT TO SHOW THE STONE COLOR ONLY. PLEASE CONSULT WITH YOUR ARCHITECT AND DESIGNER FOR BEST GROUT FOR EACH BLEND.



ASHFORD | MOSAIC



BEAVER CREEK WEBWALL | MOSAIC



CHALET BUFF MOSAIC | MOSAIC



CHALET FULL COLOR MOSAIC | MOSAIC



CHALET GREY MOSAIC | MOSAIC



CHILTON WEBWALL | MOSAIC



FOND DU LAC BUFF WEBWALL | MOSAIC



FOND DU LAC SILVER WEBWALL | MOSAIC



GOLD MICA | MOSAIC



KOHLER BUFF | MOSAIC



KOHLER FULL COLOR | MOSAIC



KOHLER GREY | MOSAIC



LANNON BUFF WEBWALL | MOSAIC



LANNON FULL COLOR WEBWALL | MOSAIC



LANNON GREY WEBWALL | MOSAIC



MOSSY MOUNTAIN | MOSAIC



PLUM CREEK MOSAIC | MOSAIC



STOCKBRIDGE | MOSAIC



TUMBLER VICTORIA | MOSAIC



VICTORIA | MOSAIC

LOOKING FOR EVEN MORE IDEAS?

WHETHER YOU ARE AT HOME OR ON THE GO, VISIT US AT HALQUISTSTONE.COM FOR THE LATEST VIDEOS, DOWNLOADABLE INFORMATION AND AN EVER CHANGING PHOTO GALLERY. PLUS DON'T FORGET TO FOLLOW US ON INSTAGRAM AT [#HALQUISTSTONE](https://www.instagram.com/halquiststone). SCAN THIS QR CODE WITH YOUR PHONE OR TABLET FOR ALL YOUR RESOURCES ON STONE.

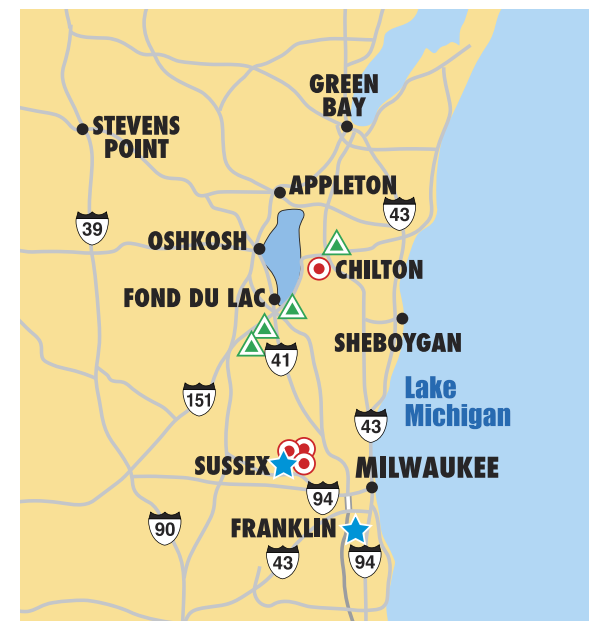


KOHLER FULL COLOR

IT'S ALL ABOUT THE DETAILS.

THE DEDICATION TO PROVIDING OUR CUSTOMERS WITH THE BEST STUFF MADE ON EARTH IS WHAT TRANSCENDS THE ORDINARY INTO A BODY OF WORK THAT INSPIRES THE SOUL.

THE STAFF AT HALQUIST STONE ARE DEDICATED TO HELPING YOU BRING YOUR IDEAS TO LIFE. WE INVITE YOU TO VISIT OUR 8,000 SQUARE FOOT DESIGNER SHOWROOM ALONG WITH OVER 4-ACRES OF OUTDOOR DISPLAYS. AFTER YOU'VE HAD AN OPPORTUNITY TO LOOK OVER THE MANY OPTIONS THAT ARE AVAILABLE TO YOU, WE CAN HELP YOU TAKE THE NEXT STEP IN DESIGNING THE HOME OR COMMERCIAL PROJECT OF YOUR DREAMS. WITH SEVEN QUARRIES AND FABRICATION FACILITIES THROUGHOUT WISCONSIN, YOU WON'T FIND A BETTER SELECTION OF COLORS AND TEXTURES DELIVERED TO YOU IN A TIMELY FASHION.





FULL VENEER/LANDSCAPE PRODUCTION | LANNON FACILITY



THINSTONE PRODUCTION | LANNON FACILITY | LANNON, WISCONSIN



LANNON QUARRY | LANNON, WISCONSIN



CHILTON QUARRY | CHILTON, WISCONSIN



STAKLEDGE COLLECTION

INCREASINGLY, THE USE OF STONE ISN'T LIMITED TO EXTERIOR AND FACADES. MORE AND MORE, STONE IS FINDING ITS WAY INSIDE HOMES. STONE BRINGS WARMTH AND CHARACTER TO STAINLESS-STEEL KITCHENS. IT INTRODUCES SUBTLE COLOR TO BEDROOMS, DINING ROOMS AND BATHROOMS.

OUR STAKLEDGE COLLECTION COMES IN A VARIETY OF HEIGHTS, RANDOM LENGTHS

AND AS INDIVIDUAL PIECES. THIS WILL PROVIDE YOU WITH A MORE NATURAL AND RUSTIC APPEARANCE. STAKLEDGE IS DESIGNED FOR A DRY-STACK INSTALLATION AND HAS 90-DEGREE CORNERS AVAILABLE ON SOME COLORS AS WELL. SO BE PREPARED TO BE DAZZLED WITH THIS EXPRESSIVE MATERIAL THAT'S REVOLUTIONIZING STONE.



NOTE: ALL STONE SWATCHES IN THIS CATALOG ARE SHOWN WITH NO JOINT TO SHOW THE STONE COLOR ONLY. PLEASE CONSULT WITH YOUR ARCHITECT AND DESIGNER FOR BEST GROUT FOR EACH BLEND.



BEAVER CREEK MARSH | STAKLEDGE



CORNERS UNAVAILABLE **CHARCOAL LEDGE | STAKLEDGE**



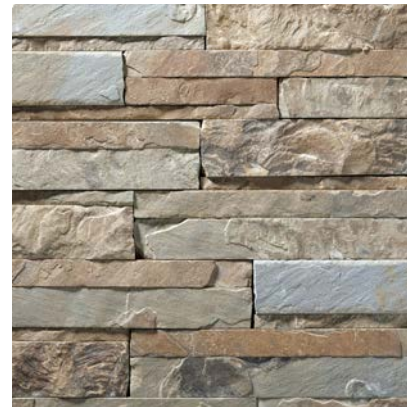
CHILTON | STAKLEDGE



CHILTON RUSTIC | STAKLEDGE



CORNERS UNAVAILABLE **COHO | STAKLEDGE**



COPENHAGEN | STAKLEDGE



FOND DU LAC BUFF | STAKLEDGE



FOND DU LAC FULL COLOR | STAKLEDGE



FOND DU LAC SILVER | STAKLEDGE



LANNON BUFF | STAKLEDGE



LANNON FULL COLOR | STAKLEDGE



LANNON GREY | STAKLEDGE



AVAILABLE IN THIN ONLY **RICHMOND LEDGE | STAKLEDGE**



AVAILABLE IN THIN ONLY **STEELHEAD | STAKLEDGE**



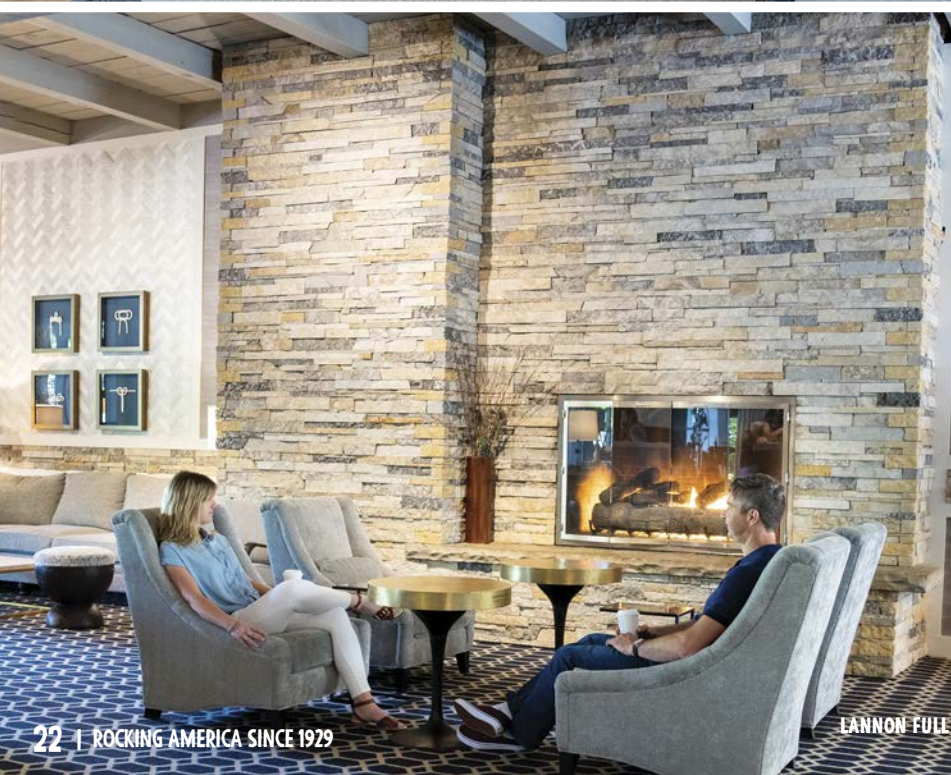
AVAILABLE IN THIN ONLY CORNERS UNAVAILABLE **VICKSBURG | STAKLEDGE**



FOND DU LAC BUFF STAKLEDGE

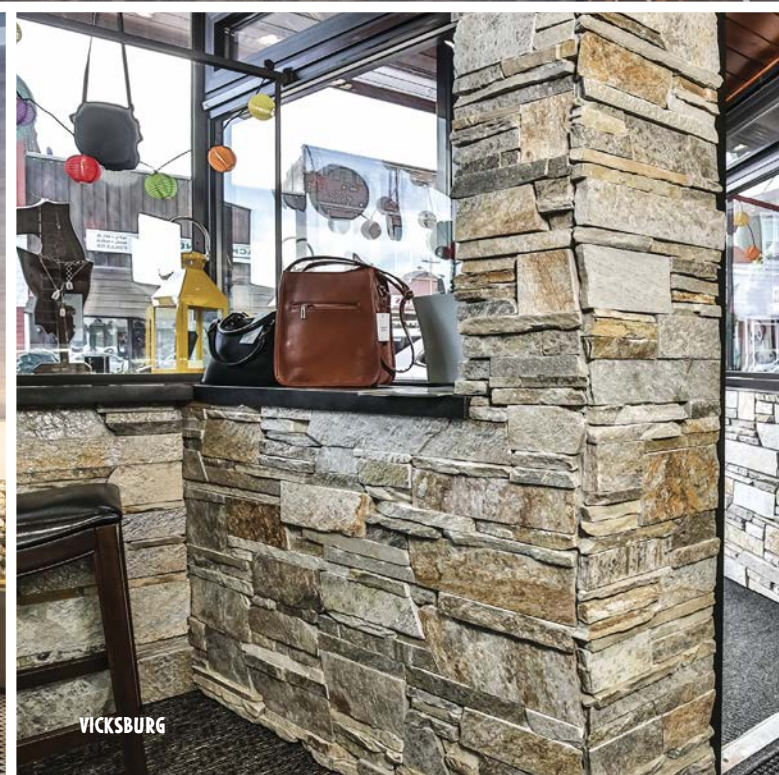


COPENHAGEN STAKLEDGE



22 | ROCKING AMERICA SINCE 1929

LANNON FULL COLOR STAKLEDGE



VICKSBURG



INSTALLATION MADE EASY.

EVER WONDER HOW EASY IT IS TO INSTALL HALQUIST THINSTONE?

WHILE THE SIX ILLUSTRATIONS AT THE BOTTOM MAKE IT LOOK EASY, IT'S ACTUALLY AS SIMPLE AS INSTALLING THE MANUFACTURED STUFF ALL AT A COMPARABLE PRICE. TO FIND OUT FOR YOURSELF HOW SIMPLE IT IS TO HAVING THE BEAUTY OF NATURAL STONE AND STAYING WITHIN YOUR BUDGET, REQUEST YOUR COMPLIMENTARY DVD COPY OF HOW TO INSTALL HALQUIST THINSTONE TODAY AT HALQUISTSTONE.COM OR SCAN THE QR CODE. ONCE YOU WATCH IT YOU'LL WONDER WHY YOU EVER WENT ARTIFICIAL.

MOST VENEERS SHOWN IN THIS CATALOG ARE AVAILABLE IN EITHER FULL VENEER OR THINSTONE.



THINSTONE
FLATS

THINSTONE
CORNERS

FULL-SIZE
VENEER



APPLY THE MORTAR



INSTALL CORNERS FIRST



INSTALL THE FLATS



GROUT THE JOINTS



FINISH THE JOINTS



2 1/4 COURSED COLLECTION

HALQUIST STONE TOOK OUR POPULAR STAKLEDGE COLLECTION AND MADE IT MORE SIMPLISTIC FOR INSTALLATION. THE RESULT IS THE DISTINCTIVE APPEARANCE OF 2 1/4 COURSED CUT WHICH DELIVERS A TIMELESS FEEL TO ANY ENVIRONMENT - WHETHER IT'S AN EXTERIOR OR INTERIOR APPLICATION.

THE 2 1/4 COURSED COLLECTION WAS DESIGNED FOR A TIGHT-FIT, QUICK

AND EASY INSTALLATION. EACH STONE IS INDIVIDUAL WHICH ALLOWS FOR A SEAMLESS INSTALLATION AND UNLIKE PANELS WHERE YOU CAN VISUALLY SEE THE PANEL CONNECTIONS. THE STONE FEATURES A SAWED HEIGHT OF 2 1/4", NATURAL ENDS AND RANDOM LENGTHS THAT RANGE FROM 4" TO 24". ALSO AVAILABLE IN CUSTOM HEIGHTS...ENDS ARE NOT TYPICALLY SQUARE.



REGAL | 2 1/4 COURSED STAK CUT



NOTE: ALL STONE SWATCHES IN THIS CATALOG ARE SHOWN WITH NO JOINT TO SHOW THE STONE COLOR ONLY. PLEASE CONSULT WITH YOUR ARCHITECT AND DESIGNER FOR BEST GROUT FOR EACH BLEND.



CONCORD | 2 1/4 COURSED



COPENHAGEN | 2 1/4 COURSED



MAYFAIR BUFF | 2 1/4 COURSED



MAYFAIR GREY | 2 1/4 COURSED



REGAL | 2 1/4 COURSED



RUBICON | 2 1/4 COURSED



VANDERBILT | 2 1/4 COURSED

BUILT WITH VALUES.

FROM INVESTING IN STATE-OF-THE-ART EQUIPMENT AND FOLLOWING THE SAME VALUES OF QUALITY THAT OUR FOUNDER, JOHN HALQUIST, INSTALLED INTO THE FRAME WORK OF OUR COMPANY 95 YEARS AGO, WE CONTINUE TO LEAD THE BUILDING AND LANDSCAPING STONE INDUSTRY WITH QUALITY AND UNPARALLELED CUSTOMER SERVICE.

WITH THE LAND THAT COVERS OUR NINE QUARRIES, HALQUIST STONE PROVIDES SOME OF THE MOST UNIQUE COLORS AND TEXTURES MADE FROM THE BEST STUFF ON EARTH. THROUGH THEIR KEEN EYE TO DETAIL, OUR CRAFTSMEN WORK HARD TO CREATE A PRODUCT THAT'S MORE THAN JUST STONE THAT COVERS A BUILDING, BUT A LASTING ARCHITECTURAL MASTERPIECE. HALQUIST HAS SOME OF THE MOST ADVANCED TECHNOLOGY IN THE INDUSTRY, INCLUDING STATE-OF-THE-ART 3, 4 AND 5-AXIS CNC MACHINES.

THE SPIRIT OF INNOVATION AND CUSTOMER SERVICE AT HALQUIST STONE STILL REMAINS AS IT DID IN 1929. AT EVERY LEVEL OF OUR ORGANIZATION WE UNDERSTAND THAT CUSTOMER SERVICE IS JOB #1. THAT'S WHY AS A HOMEOWNER, LANDSCAPER, ARCHITECT OR QUALITY HOME BUILDER YOU CAN REST ASSURE THAT WE WILL DO EVERYTHING IN OUR POWER TO GAIN YOUR TRUST AS YOUR #1 SOURCE FOR ALL YOUR NATURAL STONE NEEDS.





THINSTONE VS. FULL VENEER

SO YOU LIKE THE LOOK THAT MOTHER NATURE PROVIDES IN OUR FULL VENEER, BUT JUST DOESN'T FIT YOUR PROJECT - DON'T FRET!

FOR STARTERS, WE USE REAL BUILDING STONE AND SAW OR SPLIT THE FRONTS OFF OF THE STONE, GIVING YOU ONE-OF-A-KIND TEXTURES AND TONES THAT SIMPLY CAN'T BE DUPLICATED. SECOND, AS YOU CAN SEE BY VIEWING OUR PICTURES, YOU CAN'T TELL THE DIFFERENCE ONCE THE THINSTONE IS INSTALLED WHETHER ITS 4-INCHES THICK, OR 1 1/2 INCHES THICK. THIRD, EVERY VERSION OF OUR DOLOMITE COMES IN THIN OR FULL VENEER. FINALLY, HALQUIST THINSTONE IS MUCH EASIER TO INSTALL THAN REGULAR BUILDING STONE AND IT CAN BE APPLIED TO ALMOST ANY SURFACE.

ADVANTAGES OF HALQUIST THINSTONE

A MAJORITY OF FULL VENEER PRODUCTS ARE AVAILABLE AS HALQUIST THINSTONE®. THINSTONE IS APPROXIMATELY 3/4" TO 1 1/4" INCHES THICK COMPARED TO OUR NOMINAL 4-INCH FULL VENEER. THIS ALLOWS NATURAL STONE TO BE APPLIED ANYWHERE DUE TO THE LIGHT WEIGHT OF THINSTONE AND THE ABILITY TO APPLY IT TO MOST SUBSTRATES.

COST. THINSTONE IS LIGHT IN WEIGHT, WHICH IS FASTER AND QUICKER TO INSTALL - ALLOWING MASON CONTRACTORS TO INSTALL MORE SQUARE FOOTAGE PER DAY. THE DIFFERENCE IN WEIGHT OF THINSTONE VERSUS FULL VENEER ALLOWS ALMOST 400% MORE SQUARE FOOTAGE THAT CAN BE SHIPPED BY THE TRUCKLOAD. THIS SAVES NOT ONLY ON FREIGHT AND ENERGY CONSUMPTION TO DELIVER THE PRODUCT, BUT HELPS HALQUIST'S GOAL OF PROVIDING AN ECO-FRIENDLY PRODUCT THROUGH OUR GREEN BUILDING INITIATIVE.

APPEARANCE. IT'S ALL ABOUT CURB APPEAL. BESIDES LANDSCAPING, THE USE OF NATURAL MATERIALS IS ONE OF THE MOST DESIRABLE FEATURES OF THE EXTERIOR OF THE HOME. MOTHER NATURE CREATED IT. HALQUIST STONE PERFECTED IT. THINSTONE IS COMPARABLE IN WEIGHT, PRICE AND INSTALLATION TO ARTIFICIAL STONE. WITH THAT BEING SAID, THE OBVIOUS CHOICE IS NATURAL STONE.

CONSTRUCTION. THINSTONE DOES NOT REQUIRE A LEDGE OR FOOTING LIKE CONVENTIONAL FULL-SIZE STONE. IT'S SUPPORTED BY THE WALL RATHER THAN THE FOOTING UNDERNEATH. THAT'S WHERE A SUBSTANTIAL AMOUNT OF SAVINGS IS. A HOUSE CAN BE CONSTRUCTED FROM CONVENTIONAL METHODS RATHER THAN FRAMING IT FOR MASONRY.

IN THE WORLD OF ARCHITECTURAL STONE, THERE ARE MORE AND MORE OPTIONS AVAILABLE. AND NO MATTER HOW YOU LOOK AT IT, FULL VENEER IS STILL THE GOLD STANDARD IN MASONRY. FULL VENEER AVERAGES ABOUT 35 TO 40 SQUARE FEET PER TON (ABOUT 55 POUNDS PER SQUARE FOOT). THE TYPICAL BED DEPTH OF FULL VENEER IS 3" TO 5".

BENEFITS OF FULL VENEER

- ABILITY TO SHOW THE FULL TEXTURE OF THE STONE, INCLUDING SHADOWS AND SHELVES WITH DIFFERENT GROUT TECHNIQUES
- DEPENDING ON THE STYLE YOU CHOOSE, THE COST OF THE QUARRYING MAY BE LESS FOR THE FULL VENEER
- MORE FLEXIBILITY AT THE JOBSITE



BLEND COLLECTION

NATURAL STONE FROM HALQUIST COMES FROM A BROAD RANGE OF COLORS, PATTERNS, FINISHES AND TEXTURES. THINK BACK TO WHEN YOU WERE A KID AND FOUND DIFFERENT COLORED STONES THAT WERE BEAUTIFULLY UNIQUE. NATURAL STONES DIVERSITY AND WHAT YOU CAN DO WITH IT AESTHETICALLY IS ABOUT AS VARIED AS YOUR IMAGINATION.

THE BLEND COLLECTION COMBINES A WIDE VARIETY OF STONES INTO ONE BEAUTIFUL BLEND. THEY REPRESENT A MIXTURE OF WEATHEREDGE, SPLITFACE, BEDFACE AND BOULDERS. SO NO MATTER WHAT YOUR VISION, HALQUIST CAN HELP BRING IT TO REALITY.

TREVINO



FOND DU LAC SILVER CHOPPED



KENSINGTON
WITH ROCKFACED LANNON SURROUND

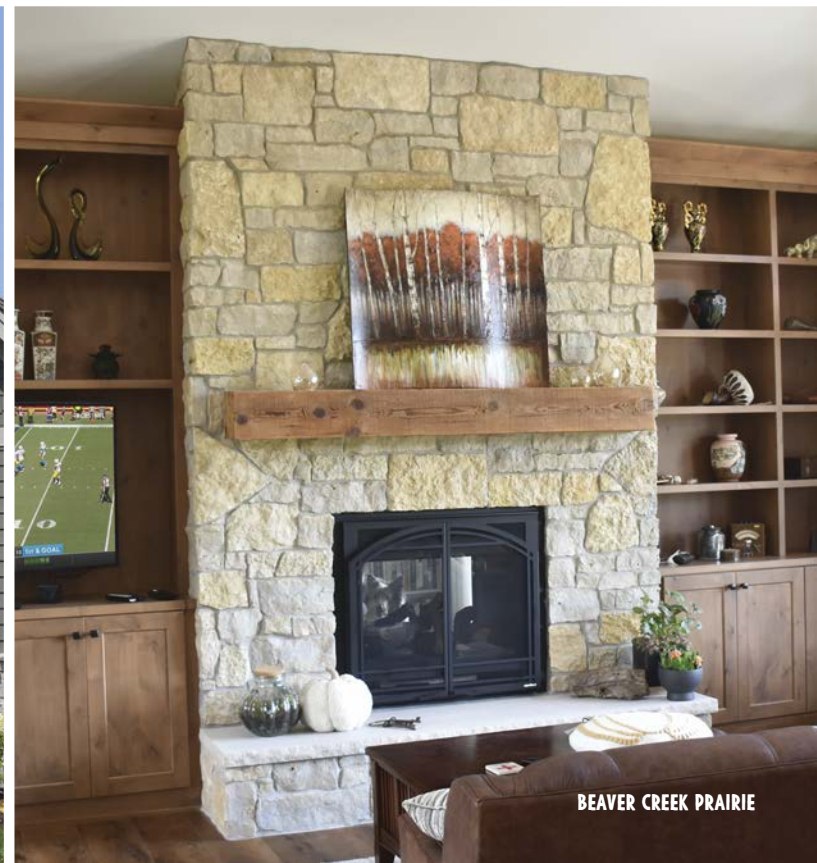


WOODSTOCK

GENEVA - WITH TRIMMED ENDS



STERLING GREY



BEAVER CREEK PRAIRIE



MANCHESTER



MESQUITE



RUSTIC STRIP



NOTE: ALL STONE SWATCHES IN THIS CATALOG ARE SHOWN WITH NO JOINT TO SHOW THE STONE COLOR ONLY. PLEASE CONSULT WITH YOUR ARCHITECT AND DESIGNER FOR BEST GROUT FOR EACH BLEND.



BEAVER CREEK MARSH | BLEND



BEAVER CREEK PRAIRIE | BLEND



CALUMET FULL COLOR | BLEND



CALUMET GREY | BLEND



CAMBRIDGE | BLEND



CHILTON CHOPPED | BLEND



COBBLE CREEK ROCK | BLEND



CUMBERLAND | BLEND



DUBLIN | BLEND



GENEVA | BLEND



HIDDEN CREEK | BLEND



KENSINGTON BUFF | BLEND



KENSINGTON FULL COLOR | BLEND



KENSINGTON GREY | BLEND



KINGSTON | BLEND



MANCHESTER | BLEND



MESQUITE | BLEND



MULBERRY | BLEND



ROCHESTER | BLEND



RUSTIC STRIP | BLEND



SILVER NATURAL CHOPPED | BLEND



STERLING GREY | BLEND



TIMBERLAND | BLEND



TREVINO | BLEND



TUMBLED STERLING GREY | BLEND



WOODSTOCK | BLEND



ROCHESTER



CASTLE COLLECTION

CASTLESTONE FROM HALQUIST IS ONE OF THE MOST BEAUTIFUL COLLECTIONS OF NATURAL STONES AVAILABLE. THIS STONE IS A SELECTION OF STONES THAT ARE SET IN A RANDOM ASHLAR PATTERN DOMINATED WITH TALLER OR BLOCKY PIECES. THE STONES MAY CONSIST OF BEDFACE, SPLITFACE OR HAND-ROCKFACED PIECES. FOR A RUGGED LOOK, THE CASTLESTONE COLLECTION IS DIMENSIONED BY

EITHER SPLIT OR SAWED HEIGHTS. A SAWED BED IS ALSO EASIER FOR THE MASONS TO INSTALL AND MORE ECONOMICAL ON THE BOTTOM-LINE. WE USUALLY LEAVE A HALF INCH GAP FOR SAWED BED MORTAR JOINTS. A MORE FORMAL AND CLEAN-EDGED LOOK IS AVAILABLE IN A RICH BLEND OF TEXTURES AND COLORS FOR AN UNMISTAKABLE DESIGN EXPRESSION.



LANNON BUFF HANDCUT

GREY BUFF CHATEAU



LONG ISLAND



CHAMBORD



POTOMAC



SUSSEX GREY



NOTE: ALL STONE SWATCHES IN THIS CATALOG ARE SHOWN WITH NO JOINT TO SHOW THE STONE COLOR ONLY. PLEASE CONSULT WITH YOUR ARCHITECT AND DESIGNER FOR BEST GROUT FOR EACH BLEND.



BEAVER CREEK CASTLE | CASTLE



CARBONDALE | CASTLE



CASTLEWOOD | CASTLE



CHAMBORD | CASTLE



CHATEAU FULL COLOR | CASTLE



COLONIAL | CASTLE



COPENHAGEN | CASTLE



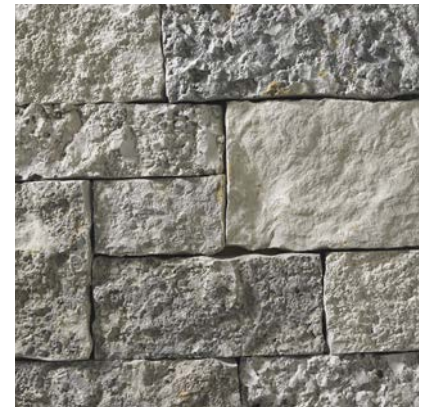
GREY CHATEAU | CASTLE



GREY BUFF CHATEAU | CASTLE



HAMILTON BUFF | CASTLE



HAMILTON GREY | CASTLE



LANNON BUFF HANDCUT | CASTLE



LANNON CHATEAU | CASTLE



LONG ISLAND | CASTLE



AVAILABLE IN
THIN ONLY

POTOMAC | CASTLE



SEVILLE | CASTLE



TUMBLED CHATEAU FULL COLOR | CASTLE



TUMBLED COPENHAGEN | CASTLE



TUMBLED GREY/BUFF CHATEAU | CASTLE

COPENHAGEN



TUMBLED GREY/BUFF CHATEAU





DIMENSIONAL COLLECTION

THE DIMENSIONAL COLLECTION FROM HALQUIST STONE HAS BEEN SELECTED, TRIMMED AND CUT TO SPECIFIC HEIGHTS - WHICH ARE STANDARD AT 2 1/4", 5" AND 7 3/4". LARGER HEIGHTS AT 10 1/2" ARE ALSO AVAILABLE UPON REQUEST. THE COLOR, TEXTURE AND OUR QUARRIES ARE ALL FACTORS THAT DETERMINES THE BLEND.

THE CLEAN AND SAWED HEIGHTS OF THE COLLECTION WILL GIVE A CONTEMPORARY LOOK TO ANY PROJECT - COMMERCIAL OR RESIDENTIAL. A VARIETY OF FINISHES CAN ALSO BE APPLIED TO DIMENSIONAL STONE TO ACHIEVE A DIVERSE ARCHITECTURAL AND AESTHETIC EFFECTS. MOST DIMENSIONAL BLENDS ARE AVAILABLE IN BOTH FULL VENEER AND THINSTONE.



IDEAL FULL COLOR

SUSSEX GREY SPLITFACE



MAYFAIR BUFF



MELBOURNE



MONARCH



BEAVER CREEK DIMENSIONAL - CUSTOM HEIGHTS



LANDMARK

MIDDLETON



REGAL | KOHLER CREDIT UNION HEADQUARTERS | SHEBOYGAN, WISCONSIN



RUBICON

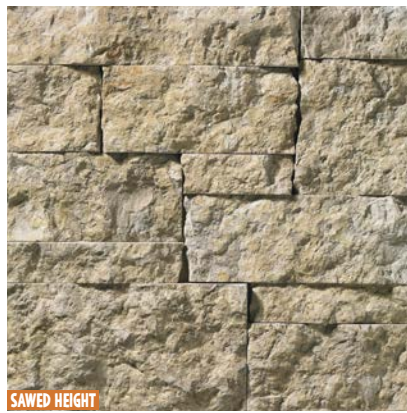


DEL MAR





NOTE: ALL STONE SWATCHES IN THIS CATALOG ARE SHOWN WITH NO JOINT TO SHOW THE STONE COLOR ONLY. PLEASE CONSULT WITH YOUR ARCHITECT AND DESIGNER FOR BEST GROUT FOR EACH BLEND.



SAWED HEIGHT

BEAVER CREEK | DIMENSIONAL



SAWED HEIGHT

BILTMORE | DIMENSIONAL



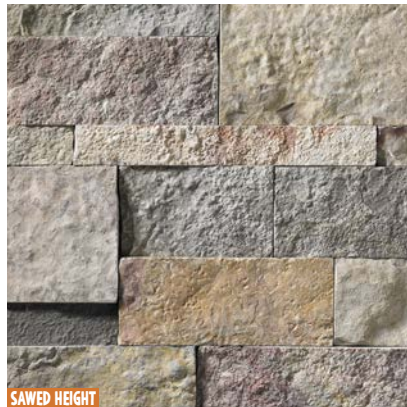
SAWED HEIGHT

CHEYENNE | DIMENSIONAL



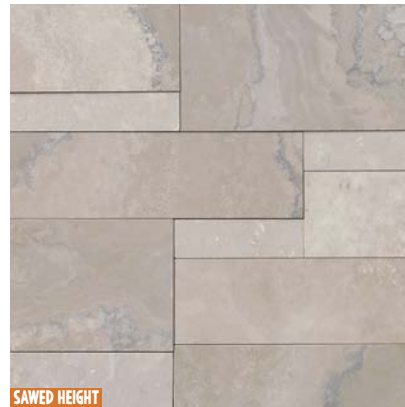
SAWED HEIGHT

CHILTON HONED | DIMENSIONAL



SAWED HEIGHT

CONCORD | DIMENSIONAL



SAWED HEIGHT

DEL MAR | DIMENSIONAL



SAWED HEIGHT

DIMENSIONAL CHALET BUFF | DIMENSIONAL



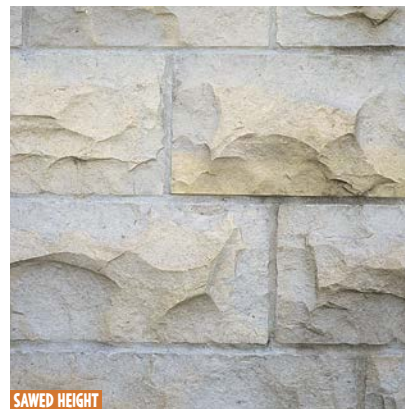
SAWED HEIGHT

DIMENSIONAL CHALET FULL | DIMENSIONAL



SAWED HEIGHT

DIMENSIONAL CHALET GREY | DIMENSIONAL



SAWED HEIGHT

HAND ROCKFACED LANNON | DIMENSIONAL



SAWED HEIGHT

HARBOR GREY SPLITFACE | DIMENSIONAL



SAWED HEIGHT

IDEAL BUFF | DIMENSIONAL



SAWED HEIGHT

IDEAL FULL COLOR | DIMENSIONAL



SAWED HEIGHT

IDEAL GREY | DIMENSIONAL



SAWED HEIGHT

JERICO | DIMENSIONAL



LANDMARK | DIMENSIONAL



MAYFAIR BUFF | DIMENSIONAL



MAYFAIR FULL COLOR | DIMENSIONAL



MAYFAIR GREY | DIMENSIONAL



MELBOURNE | DIMENSIONAL



MIDDLETON | DIMENSIONAL



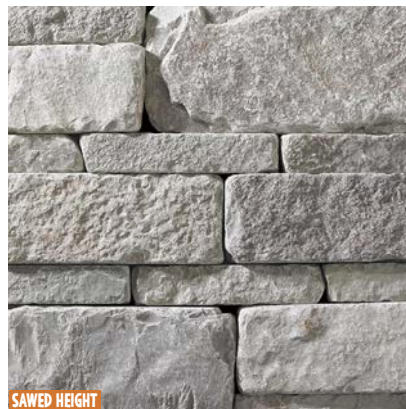
MONARCH | DIMENSIONAL



NASHVILLE | DIMENSIONAL



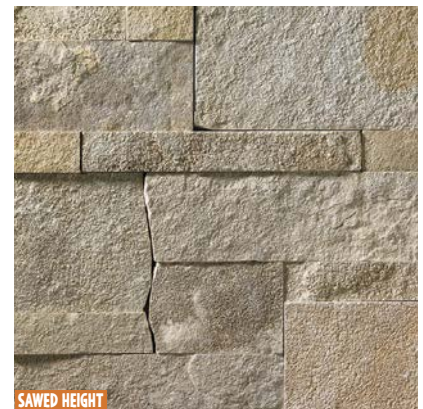
OXFORD | DIMENSIONAL



PLUM CREEK | DIMENSIONAL



PRINCETON | DIMENSIONAL



REGAL | DIMENSIONAL



RUBICON | DIMENSIONAL



SMOKEY MOUNTAIN | DIMENSIONAL



SMOKEY ROCKFACE | DIMENSIONAL



SUSSEX BUFF | DIMENSIONAL



SAWED HEIGHT

SUSSEX BUFF SPLITFACE | DIMENSIONAL



SAWED HEIGHT

SUSSEX GREY | DIMENSIONAL



SAWED HEIGHT

SUSSEX GREY SPLITFACE | DIMENSIONAL



SAWED HEIGHT

TUMBLED BILTMORE | DIMENSIONAL



SAWED HEIGHT

TUMBLED MIDDLETON | DIMENSIONAL



SAWED HEIGHT

TUMBLED VANDERBILT | DIMENSIONAL



SAWED HEIGHT

TUMBLED WINNEBAGO | DIMENSIONAL



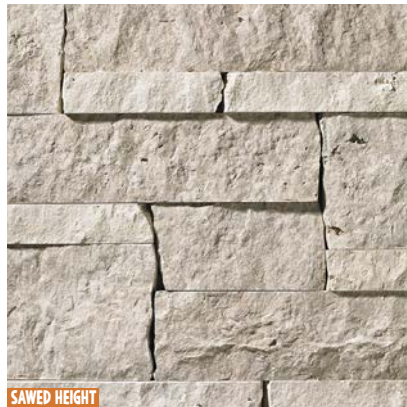
SAWED HEIGHT

VANDERBILT | DIMENSIONAL



SAWED HEIGHT

WAUKESHA BROWN | DIMENSIONAL



SAWED HEIGHT

WAUKESHA BUFF | DIMENSIONAL



SAWED HEIGHT

WINNEBAGO | DIMENSIONAL



OUR SIGNAGE CAN TURN SOME HEADS.

IN TODAY'S WORLD, YOU MUST GRAB SOMEONE'S ATTENTION AT A MOMENTS NOTICE. USING CREATIVE OUTCROPPING SIGNAGE FROM HALQUIST STONE CAN HELP YOUR PROJECT STAND OUT FROM THE CROWD. WHETHER YOU'RE IN NEED OF A SIGN FOR AN ENTRANCE OF A NEIGHBORHOOD SUBDIVISION, A CORPORATE OFFICE OR EVEN A RETAIL STORE, HALQUIST HAS A WIDE VARIETY OF COLORS, SIZES AND SHAPES TO MEET YOUR NEEDS. WE WILL TAKE YOUR LOGO AND SANDBLAST IT WITH CUSTOM PAINT THAT WILL LAST YEARS TO COME.



TUMBLER MIDDLETON



BOULDER COLLECTION

DESIGN YOUR PROJECTS TO STAND OUT, TO REFLECT YOUR PASSION, YOUR TASTE AND YOUR RESPONSIBILITY. NATURAL STONE FROM HALQUIST IS A ONE-OF-A-KIND BUILDING MATERIAL THAT SETS YOU APART FROM OTHERS BECAUSE IT CAN'T BE MIMICKED, MANUFACTURED, OR FAKED. IT IS FOR THOSE WITH IMAGINATION THAT NEVER EXPIRES.

THE BOULDER COLLECTION INCORPORATES NATURAL-FREE FORM CHUNKS OR BOULDERS GIVING YOUR PROJECT A TIMELESS OLD WORLD LOOK TO BE ENJOYED FOR YEARS TO COME. NATURAL STONE WILL GIVE YOU AN UNPARALLELED BEAUTY, QUALITY AND VALUE

LISBON GREY



OLD BARN



NIAGARA BOULDERS





NOTE: ALL STONE SWATCHES IN THIS CATALOG ARE SHOWN WITH NO JOINT TO SHOW THE STONE COLOR ONLY. PLEASE CONSULT WITH YOUR ARCHITECT AND DESIGNER FOR BEST GROUT FOR EACH BLEND.



BIRCHWOOD COBBLES | BOULDER



COBBLE CREEK ROCK | BOULDER



ERIN HILLS | BOULDER



FIELDSTONE COBBLES | BOULDER



LISBON | BOULDER



LISBON BUFF | BOULDER



LISBON CHARCOAL | BOULDER



LISBON GREY | BOULDER



NIAGARA BOULDERS | BOULDER



OLD BARN | BOULDER



SARATOGA | BOULDER



SPLIT FIELDSTONE | BOULDER

BIRCHWOOD COBBLES



SARATOGA



LISBON



SPLIT FIELDSTONE



AMERICAN COLLECTION

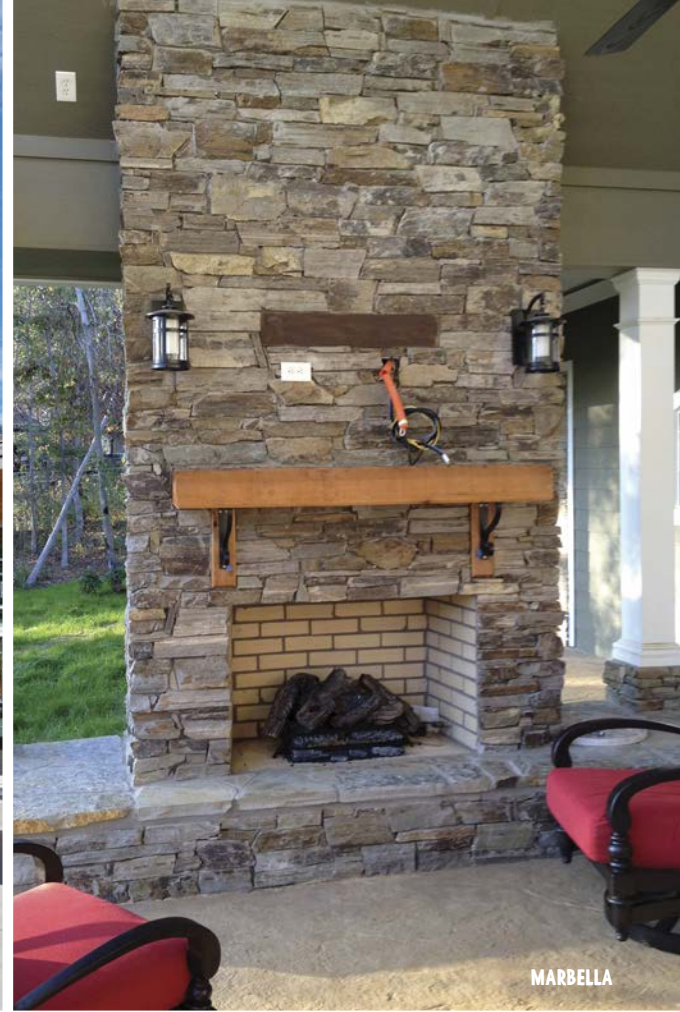
WHETHER YOU ARE REMODELING A HISTORIC HOME IN NEW ENGLAND, BUILDING A CABIN IN THE MOUNTAINS OF COLORADO, OR YOUR DREAM HOME IN SALT LAKE CITY, HALQUIST STONE HAS THE PERFECT STONE BLEND TO FIT YOUR EVERY NEED.

HALQUIST BUYERS HAVE TRAVELED THE WORLD IN SEARCH OF STONES THAT ARE UNIQUE IN COLOR AND CAPABLE OF CREATING A HOME THAT WILL STAND

THE TEST OF TIME OF GREAT DESIGN AND COLOR. HALQUIST STONE DISTRIBUTES UNIQUE BUILDING STONE FROM AROUND ALL CORNERS OF THE WORLD. IF YOU DESIRE A PARTICULAR BLEND OF COLORS, LET THE EXPERTS AT HALQUIST CUSTOM CREATE ONE FOR YOUR ARCHITECTURAL MASTERPIECE.



WEST COAST MIX - CASTLE/LEDGE



MARBELLA

WILDHORSE SWIRL



SAN SABA CREAM



GOLD MICA



APACHE AUTUMN | AMERICAN



COFFEE ROCK | AMERICAN



CHERRY HILL | AMERICAN



DEL RIO | AMERICAN



DELAWARE | AMERICAN



GOLD MICA | AMERICAN



HUDSON VALLEY DIMENSIONAL | AMERICAN



LISBON BIANCO | AMERICAN



MARBELLA | AMERICAN



PROVINCIAL BEIGE | CLASSIC TWIST



SANDHILL RUSTIC | AMERICAN



SAN SABA CREAM CHOPPED | AMERICAN



SAN SABA WHITE SAWN | AMERICAN



WEST COAST LEDGE | AMERICAN



WEST COAST MIX | AMERICAN



WILDHORSE SWIRL | AMERICAN



CUT STONE+TILE COLLECTION

AS ONE OF THE LARGEST FABRICATORS OF CUT STONE AND TILE FLOORING IN THE MIDWEST, HALQUIST COMBINES MODERN TECHNOLOGY WITH TRADITIONAL CRAFTSMANSHIP TO BRING YOUR UNIQUE VISION TO REALITY.

IN ADDITION TO TRADITIONAL LIMESTONE MATERIAL, HALQUIST SOURCES MATERIAL FROM A VARIETY OF QUARRIES. THIS ALLOWS A BROAD RANGE OF LIMESTONES,

AS WELL AS SANDSTONE, DOLOMITE AND GRANITE. WE OFFER ARCHITECTS, BUILDERS AND HOMEOWNERS A VERSATILITY THAT IS UNMATCHED BY ANY OTHER FABRICATOR OF CUT STONE.

WITH HALQUIST'S WIDE SELECTION OF COLORS, GRADES AND SIZES, WE ASSURE THAT ALL AESTHETIC REQUIREMENTS OF THE MOST DEMANDING PROJECTS ARE MET. OUR OLD WORLD CRAFTSMANSHIP WITH STATE-OF-THE ART 3,4 AND 5 AXIS CNC MACHINES AND EXCELLENCE IN CUSTOMER SERVICE MATCH THE BROAD RANGE OF COLORS AND GRADES OF STONE THAT ARE AVAILABLE.



ARCHITECTURAL CUT STONE + TILE FLOORING



ALEUTIAN MARBLE

TF PO HO BR BU SB TH



BEAVER CREEK

TF PO HO BR BU SB TH EC



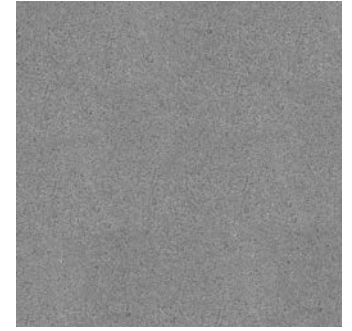
BENGAL

TF PO HO BR BU SB EC



BIRMINGHAM BUFF

TF PO HO BR BU SB TH EC



BLUE MESA

TF HO BR BU SB TH EC



CARTHAGE MARBLE - FLUERI CUT

TF PO HO BR BU SB EC



CARTHAGE MARBLE - VEIN CUT

TF PO HO BR BU SB EC



CHEYENNE

HO BR BU SB EC



DOVER GREY

TF



HUDSON VALLEY

TF PO HO BR BU SB TH EC



INDIANA BUFF

TF PO HO BR BU SB EC



INDIANA GREY

TF PO HO BR BU SB EC



IVORY MARBLE

TF HO BR BU SB TH EC



KINGSFORD

TF HO BR BU SB EC



LISBON BIANCO

TF PO HO BR BU SB



OXFORD

TF PO HO BR BU SB EC



ODESSA

TF PO HO BR BU SB TH EC



PEWTER LANNON

TF PO HO BU SB TH EC



(COLOR RANGE SHOWN) **PLAZA GREY**

TF PO HO BR BU SB EC



PROVINCIAL BEIGE

TF PO HO BR BU SB



PEWTER HONED AND BEAVER CREEK MIX



TITANIUM

TF | PO | HO | BR | BU | SB | EC



TUXEDO GREY

TF | PO | HO | BR | BU | SB | TH | EC



WAUKESHA BROWN

HO | BU | SB | EC



WAUKESHA BUFF

HO | BU | SB | EC

NOTE: ALL CUT STONE SWATCHES ARE SHOWN IN HONED FINISH. OTHER FINISHES AVAILABLE.



CHILTON FULL COLOR | BEDFACE



FOND DU LAC SILVER | BEDFACE



LANNON BUFF | BEDFACE



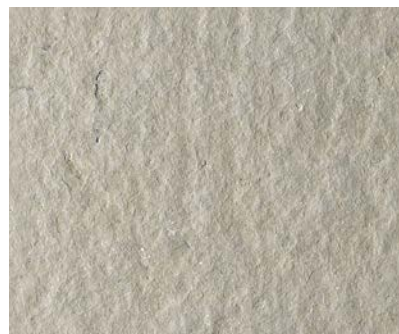
LANNON GREY | BEDFACE

AMERICA'S MOST POPULAR FINISHES!

LEGEND KEY. BELOW ARE THE FINISH CAPABILITIES OF EACH STONE PROFILE

- PO** POLISHED
- HO** HONED
- BR** BRUSHED
- BU** BUSHHAMMERED
- SB** SANDBLASTED
- TH** THERMAL
- EC** EXTERIOR COPING
- TF** TILE FLOORING

ALL COLORS SHOWN IN HONED FINISH



THERMAL



BUSHHAMMERED



SANDBLASTED
ROCKING AMERICA SINCE 1929 | **59**

Sustainability Recognized.



HALQUIST STONE IS PROUD TO BE AWARDED CERTIFICATIONS FOR QUARRYING AND FABRICATION OPERATIONS UNDER ANSI-NSC 173 SUSTAINABLE PRODUCTION OF NATURAL DIMENSION STONE STANDARDS. WE ARE **THE ONLY MIDWEST DOLOMITIC LIMESTONE PRODUCER TO BE CERTIFIED, AND ONLY THE NINTH COMPANY IN THE USA** TO BE AWARDED. THIS CERTIFICATION IS THE **ONLY** CERTIFICATION FOR STONE COMPANIES, AND IS NATIONALLY RECOGNIZED BY THE UNITED STATES GREEN BUILDING COUNCIL. ARCHITECTS, MASONS, AND OWNERS CAN REST ASSURED THAT HALQUIST STONE PRODUCTS HAVE BEEN PRODUCED TO THE HIGHEST STANDARDS OF SOCIAL, ECONOMIC AND ENVIRONMENTAL RESPONSIBILITY IN THE STONE INDUSTRY.

IN ITS TRUEST FORM, SUSTAINABILITY IS A THREE-PRONG STRATEGY INVOLVING ENVIRONMENTAL, SOCIAL AND ECONOMIC REQUIREMENTS AND THAT IS HOW GREEN BUILDING PROGRAMS HAVE BEEN CREATED. CONSTRUCTION MATERIALS MUST HAVE AN ENVIRONMENTALLY PREFERABLE PROFILE OVER THEIR LIFE CYCLE, FROM RAW MATERIAL EXTRACTION THROUGH THE USE PHASE AND FINALLY AT THE END OF ITS APPLICATION. THE METHODS USED TO CONSTRUCT THE BUILDING MUST BE ENVIRONMENTALLY CONSIDERATE. USGB LEED® IS BASED ON UPHOLDING THESE CANONS, AND USING SUSTAINABLE STONE CAN GIVE ONE LEED® CREDIT - REGARDLESS OF BUILDING LOCATION.

NOTES: ALL OF HALQUIST STONE'S OWNED QUARRY SITES HAVE BEEN CERTIFIED UNDER ANSI/NSC 373. HALQUIST ALSO USES LEASED QUARRY SITES THAT OPERATE UNDER THE SAME PROCEDURES AS OUR COMPANY OWNED SITES. HALQUIST ALSO PURCHASES RAW MATERIAL FROM CERTIFIED AS WELL AS NON-CERTIFIED SITES. PLEASE CONSULT WITH YOUR SALES CONSULTANT WHICH BLENDS ARE CONSIDERED CERTIFIED UNDER ANSI/NSC 373.

CHILTON BROWN



PROUD MEMBERS OF THESE FINE ORGANIZATIONS



BECAUSE NATURAL STONE IS MADE FROM NATURE, VARIATIONS SHOULD AND CAN BE EXPECTED. EVEN THOUGH COLORS IN THIS BROCHURE ARE AS CLOSE TO THE ACTUAL BLEND AS POSSIBLE, PHOTOGRAPHIC AND PRINTING TECHNIQUES - AND ACTUAL VIEWING CONDITIONS - CAN ALTER PERCEPTION OF COLOR.

800.255.8811 | HALQUISTSTONE.COM

ONLINE RESOURCES



Rocking America Since 1929
HALQUIST
STONE

COVER IMAGE: CUSTOM BLEND
CONSISTING OF 33% BROOKFIELD BUFF JUMPERS, 33% BROOKFIELD GREY JUMPERS AND 33% HARBOR GREY JUMPERS

©2025 HALQUIST STONE | H5C042825B5E