



CREATIVE MINES®

MAKERS of STONE and MASONRY VENEER



4551



Inspired by nature.
Crafted by hand.
Built to endure.

At Creative Mines, we layer texture, color, and form to create surfaces with timeless beauty and soul.

Strengthened from within by pozzolanic innovation, every piece is made to stand the test of time — in design, in performance, and in the way it makes you feel.

This is masonry veneer for those who believe spaces should inspire, comfort, and belong. For architects, designers, builders, and those creating the places they call home.

More beauty. More integrity.
More story in every surface.

GREYPEARL Orchard Limestone
Design + Build: Modern Nest | @modern_nest
Photography: Kate Bohannon Studio | @katebohannon.studio



POWDER
Split Modular



SHADOWPLAY
Split Modular



LUNAR
Split Modular



GREENTEA
Split Modular



WILDFLOWER
Split Modular



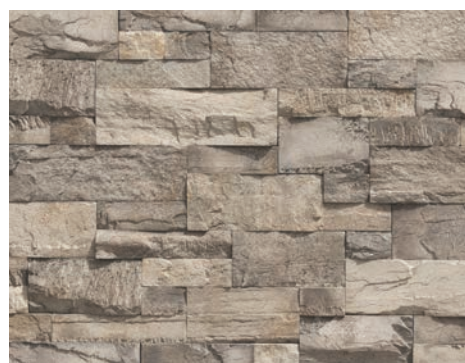
TORTOISESHELL
Split Modular



BLACKTRUFFLE
Split Modular



TIMBERWOLF
Split Modular



GREYPEARL
Split Modular



FOGBANK
Split Modular

Split Modular

Flats: 2.5" & 5" High, 4" - 16" Long, 1.125" Avg. Thickness
Corners: 2.5" & 5" High, Long Return: 5.75-12", Short Return: 3.875"-4"



Split Modular comes in 2.5" and 5" heights with varying lengths, clean cut edges, split faces and the unique pronounced sawtooth texture for added depth and shadowplay.

TIMBERWOLF Split Modular
Photography: David Papazian

Peak Ledge

Flats: 1.25" - 8.125" High, 3.375" - 25.875" Long, 1.625" Avg. Thickness
Corners: 1" - 4.125" High, Long Return: 5.125" - 12.625" Short Return: 3.125" - 5.875"



A study in contrast and control. Textured stone faces meet clean, rectilinear geometry—casting deliberate shadows that bring depth and dimension to any elevation.

FOGBANK Peak Ledge
@beaconreal | @labenwell
Photography: Chad Kelco



BLACKTRUFFLE
Peak Ledge



TIMBERWOLF
Peak Ledge



SHADOWPLAY
Peak Ledge



GREENTEA
Peak Ledge



GREYPEARL
Peak Ledge



TORTOISESHELL
Peak Ledge



ALPACA
Peak Ledge



WILDFLOWER
Peak Ledge



BISON
Peak Ledge



FOGBANK
Peak Ledge



CLOUDBREAK
Orchard Limestone



ALPACA
Orchard Limestone



WHITEGOLD
Orchard Limestone



GREYPEARL
Orchard Limestone



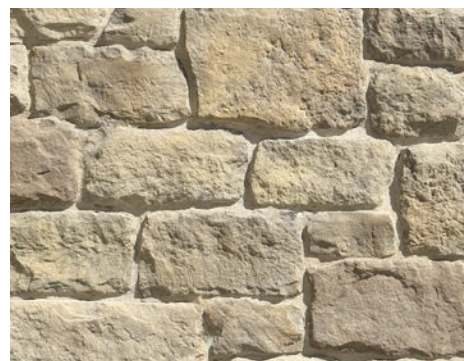
WILDFLOWER
Orchard Limestone



TIMBERWOLF
Orchard Limestone



BLACKTRUFFLE
Orchard Limestone



GREENTEA
Orchard Limestone

Orchard Limestone

Flats: 4"-13" High, 6.625" - 22.875" Long, 1.625" Avg. Thickness
Corners: 4.375"-10" High, Long Return: 7.25"-13.125", Short Return: 2.875"- 6.125"



Softened edges and varied ashlar shapes create an organic rhythm. With stones up to 23" wide, Orchard Limestone brings scale, elegance, and architectural relevance to timeless spaces.

WILDFLOWER Orchard Limestone
Design: @taysandcodesign
Builder: @wooddalebuilders
Photography @spacecrafting_photography

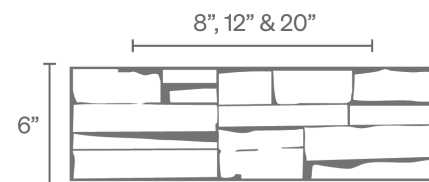
Chop Ledge Panel

Flats: 6" High, 8" - 20" Long, 1.125" Avg. Thickness
Corners: 6" High, Long Return: 7.625" - 11.625", Short Return: 3.5"



Rugged texture meets refined efficiency. Precision-cut stones in 6" panel heights and varied lengths—8", 12", and 20" offer faster installs without compromising on bold, architectural impact.

FLINT Chop Ledge Panel



SHADOWPLAY
Chop Ledge Panel



WILDFLOWER
Chop Ledge Panel



CLOUDBREAK
Chop Ledge Panel



ALPACA
Chop Ledge Panel



FLINT
Chop Ledge Panel



CASTIRON
Chop Ledge Panel

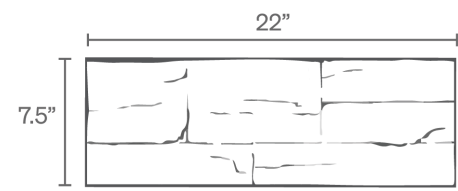


SEAPEARL
Chop Ledge Panel



LIGHTHOUSE
Chop Ledge Panel

Defined edges and dramatic sawtooth textures bring sculptural dimension to each 7.5" x 22" panel. Pre-assembled for efficiency, it's a modern solution for large-scale applications with bold architectural intent.



CLOUDBREAK
Split Modular Panel



CASTIRON
Split Modular Panel



SHADOWPLAY
Split Modular Panel



SEAPEARL
Split Modular Panel

Split Modular Panel

Flats 7.5" High x 22" Long, 1.125" Avg. Thickness
Corners 7.4375" High, 7.625" - 11.625" Long Return, 3.125" Short Return



SHADOWPLAY Split Modular Panel
Photography: Chad Kelco

Urban Strip

Flats: 4" High x 22" Long x 1.125" Avg. Thickness
Corners: 4" High, Long Return: 6" - 9", Short Return: 3"



SANDOLLAR Urban Strip
Architect - Amk Studio
Builder - Burkhardt Brothers
Interior Design - Sol Interiors
Structural Engineers - Mor Engineers
Photography - Mau Cezar



Defined by its 4" x 22" format and pronounced split-face texture, Urban Strip brings material honesty and refined linearity to designs rooted in the organic modern aesthetic.



MORNINGLIGHT
Urban Strip



SANDOLLAR
Urban Strip



WINTERFALL
Urban Strip



SHADOWPLAY
Urban Strip



WINTERFALL Urban Kings

Urban Rectangles and Urban Kings feature a bold, split-faced texture. These profiles deliver strong geometry and material depth...ideal for spaces defined by scale, simplicity, and architectural intent.



Urban Rectangle

Flats: 10" High x 20" Long, 1.25" Avg. Thickness
 Corners: 10" High, Long Return: 10", Short Return: 4" - 4.125"

Urban Kings

Flats: 12" High x 24" Long x 1.125" Avg. Thickness
 Corners: 12" High, Long Return: 12", Short Return: 4.125"



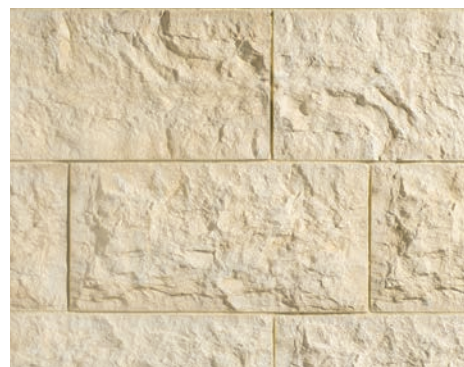
SANDOLLAR
Urban Rectangle



WINTERFALL
Urban Rectangle



WINTERFALL
Urban Kings



SANDOLLAR
Urban Kings

Foothill Rubble

Flats: 1.875"-13.25" High, 4.25"-16.25" Long, 1.5" Avg. Thickness
Corners: 2.5"-15" High, Long Return: 5.25"-12.5", Short Return: 3.5"-6.5"



Drawn from the earth, shaped by time. Irregular shapes and weathered textures lend a raw, natural elegance—bringing architecture into quiet conversation with the natural landscape.

GREYPEARL Foothill Rubble
Design: @jrpdesignandremodel



COYOTE
Foothill Rubble



TOASTED
Foothill Rubble



WILDFLOWER
Foothill Rubble



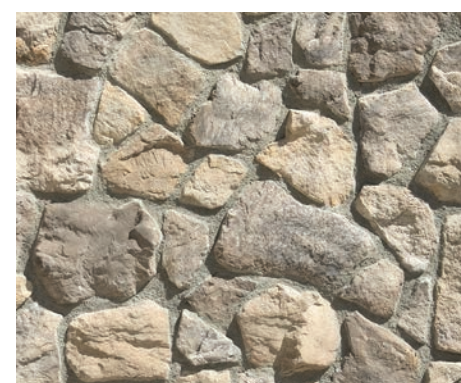
BLACKTRUFFLE
Foothill Rubble



GREENTEA
Foothill Rubble



FOGBANK
Foothill Rubble



GREYPEARL
Foothill Rubble



SHADOWPLAY
Foothill Rubble



GREENTEA
Farmhouse Ledge



TOASTED
Farmhouse Ledge



BLACKTRUFFLE
Farmhouse Ledge



COYOTE
Farmhouse Ledge



FOGBANK
Farmhouse Ledge



GREYPEARL
Farmhouse Ledge



SHADOWPLAY
Farmhouse Ledge



WILDFLOWER
Farmhouse Ledge

Farmhouse Ledge

Flats: 1.625"-10.875" High, 4.5" - 26.5" Long, 1.5" Avg. Thickness
Corners: 1.875"-6.375" High, Long Return: 5"-12.125", Short Return: 3.25"-6.625"



This informal blend of rustic ledge stones features varied forms and gently weathered faces—bringing warmth and quiet character to timeless design.

MIXOLOGY: 25% Coyote Farmhouse Ledge & 75% Coyote Foothill Rubble
Design: @taysandcodesign

Trail Ledge

Flats: 1.125" - 5.5" High, 4.625" - 20.875" Long, 1.4375" Avg. Thickness
Corners: 1.125" - 4.25" High, Long Return: 4.75" - 11.75", Short Return: 3.125" - 5.75"



Coarse, rugged faces meet clean breaks in form, creating dynamic movement and deep shadowplay. A profile shaped by nature, designed for bold expression.



FOGBANK
Trail Ledge



GREYPEARL
Trail Ledge



TIMBERWOLF
Trail Ledge



BLACKTRUFFLE
Trail Ledge



SHADOWPLAY
Trail Ledge



GREENTEA
Trail Ledge

GREYPEARL Trail Ledge
Photography: @tahoe_treehaus



MIXOLOGY Custom Color Orchard Limestone & Foothill Rubble
Design: Woodley Architectural Group
Builder: Davidson Communities
Photography: Chad Kelco

Mixology

**FREEDOM TO CREATE
WITHOUT LIMITS.**

Design is your language. Rules? Optional.

At Creative Mines, we craft stone that moves with your imagination. Mix profiles. Blend textures. Combine patterns in ways no one has dared before. And for larger, marquee projects, we can even collaborate on custom colors made just for you. Because when you're the mixologist, the possibilities aren't just endless, they're entirely your own.

Cannery Brick

Flats: 2.625" - 2.75" High, 7.25" - 7.5" Long, 0.625" Avg. Thickness
Corners: 2.5"-2.75" High, Long Return: 7.25"-7.5", Short Return: 3"-3.5"



MOONFROST
Cannery Brick



SHADOWDANCE
Cannery Brick



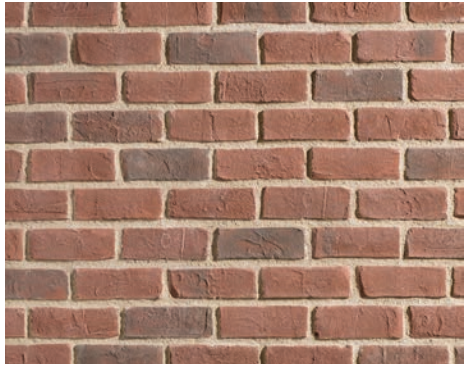
PEBBLECREEK
Cannery Brick



PLUMWOOD
Cannery Brick



ARCTICDRIFT
Cannery Brick



PEPPERED
Cannery Brick



GHOSTED
Cannery Brick



Cannery Brick is rich in history, originally reclaimed from historic buildings, each brick was hand-selected for their unique story, distinctive textures, and character marks.

ARCTICDRIFT Cannery Brick
Photography: Chad Kelco

Warehouse Brick

Flats: 2.5" High, 9.4375" Long, 0.75" Avg. Thickness
Corners: 2.5" High, Long Return: 9.5", Short Return: 3"

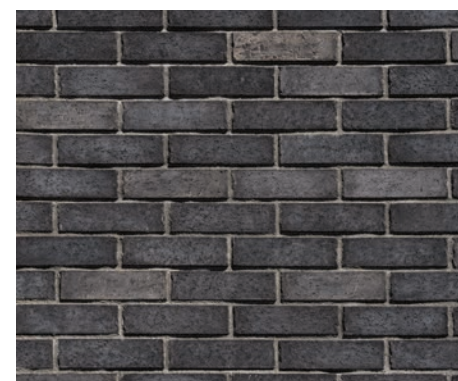


RAINCLOUD Warehouse Brick
Photography: Chad Kelco

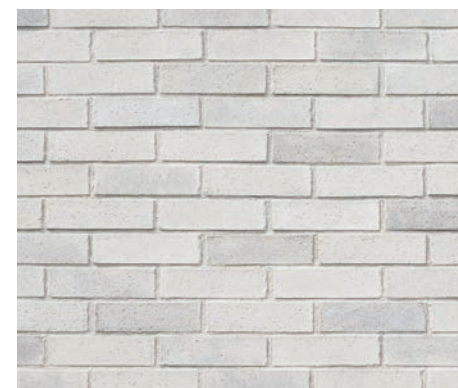
Inspired by industrial roots, elevated for today's spaces. With clean lines, textured surfaces, and a versatile palette, Warehouse Brick bridges past and present with understated architectural character.



PEBBLECREEK
Warehouse Brick



SHADOWDANCE
Warehouse Brick



CLOUDBREAK
Warehouse Brick



PLUMWOOD
Warehouse Brick



RAINCLOUD
Warehouse Brick

At 18.5" long and just 1.5" high, this linear brick redefines Mid-Century Modern form. Inspired by the waterstruck technique, each piece features a velvety surface and organic character—bridging timeless craft with contemporary design.

Novarra Brick

Flats: 18.5" Length X 1.5" Height x 1.375" Ave. Thickness
8 Different Corner Lengths:
Ranging from 6"-12" long return and 2.75" - 4.25" short return



DRIFTHOLLOW
Novarra Brick



AUTUMNBLOSH
Novarra Brick



BEACHFOAM
Novarra Brick



EVENINGTIDE
Novarra Brick



MOONVEIL
Novarra Brick



SANDBLUFF
Novarra Brick



FOGGYPEARL
Novarra Brick



AUTUMNBLOSH Novarra Brick
Photography: @tahoe_treehaus

Paintgrade Block

Modern:
Flats: 3.625" High x 15.625" Long, 0.9375" Avg. Thickness
Corners: 3.625" High, Long Return: 11.625", Short Return: 3.625"

Paintgrade Brick

Loft:
Flats: 2.25"-2.375" High, 8.25"-8.75" Long, 0.625" Avg. Thickness
Corners: 2.125"-2.5" High, Long Return: 8"-8.5", Short Return: 4" - 4.125"



MODERN Paintgrade Block
Design: Woodley Architectural Group
Builder: Davidson Communities
Photography: Chad Kelco



LOFT Paintgrade Brick
@workadaydesign
@mindfuldesigns
@gibeonphoto

Looking for the ultimate expression in creativity, select our Paintgrade Brick™ & Paintgrade Block™. Choose your favorite paint color and apply over our unique surface textures designed specifically to receive paint easier with less coats than traditional clay brick.



MODERN
Paintgrade Block



LOFT
Paintgrade Brick

A modern nod to board-formed concrete. Hand-cast from rough-sawn planks, each piece captures the wood's natural grain and knotholes—preserving the texture of the original formwork. A unique alternative to poured concrete, Board Form brings warmth, depth, and architectural interest to any surface.

Board Form®

Flats: 6" High x 36" Long, 0.75" Avg. Thickness
Corners: None



GRAYSCALE
Board Form



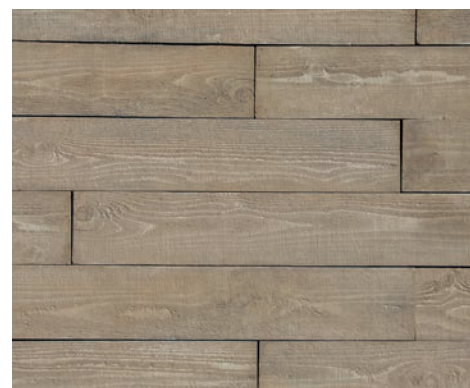
SYCAMORE
Board Form



MONSOON
Board Form



SALTSPRAY
Board Form



BARNWOOD
Board Form



MONSOON Board Form

Flamed Rectangle

Flats: 10" High x 20" Long, 1.125" Avg. Thickness
Corners: 10" High, Long Return: 10", Short Return: 4"

Carved Rectangle

Flats: 10" High x 20" Long, 1.125" Avg. Thickness
Corners: 10" High, Long Return: 10", Short Return: 4"

Marble Kings

Flats: 12" High X 24" Long, 1.25" Avg. Thickness
Corners: 12" High, Long Return: 11", Short Return: 3"

A trio of 12" x 24" and 10" x 20" stone profiles that celebrate scale and surface. From the smooth, honed elegance of Marble Kings to the artisanal grooves of Carved Rectangles and the subtle texture of Flamed Rectangles, each offers a distinct take on modern stonework with bold proportion and tactile depth.

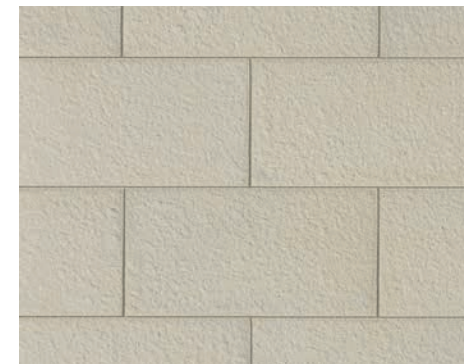
BRIGHTHORIZON Flamed Rectangle
Photography: Chris Bosco Photography



MIST
Flamed Rectangle



BRIGHTHORIZON
Flamed Rectangle



BISQUE
Flamed Rectangle



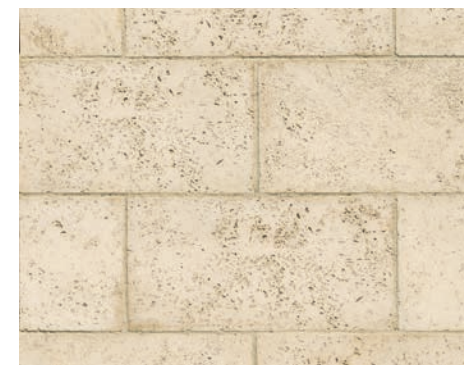
BRIGHTHORIZON
Carved Rectangle



BISCUIT
Carved Rectangle



SANDOLLAR
Carved Rectangle



WARMVIBE
Marble Kings



BRIGHTHORIZON
Marble Kings

Architectural Trim

No project is complete without applying the final touches. Creative Mines Architectural Trim is available in five complementary colorways. Each trim piece has been crafted to represent masonry techniques of historic tradition and authenticity.

IRON Dressed



WAINSCOT SILL
L: 20"
3.0" (face) - 3.25"
(back)
D: 2.625"



PEAK WALL CAP
L: 20"
H: 2.0" - 3.25" (at
peak)
Width: 12"



HEADER
5.0" High
20" Long
2.625" Thick



HEARTHSTONE
L: 20"
W: 20"
2" Thick



KEYSTONE
8.0" (top) - 5.0" (bottom)
H: 10.25"
2.0" Thick



**DOORBELL/
HOSE BIB**
W: 5.0"
H: 5.0"
1.25" Thick
1.5" Opening



TRIM STONE
W: 6.0"
L: 8.0"
2.0" Thick



**UTILITY / WALL
LIGHT**
W: 8.0"
H: 10"
1.25" Thick
4.0" Opening



COLUMN CAP
L: 24"
W: 24"
2.0" Thick



**UTILITY / TRIM
(DOUBLE)**
W: 8.0"
H: 9.0"
1.25" Thick
4.25" x 4.25" Opening



FLAT WALL CAP
L: 20"
W: 12"
2.0" Thick



**UTILITY / TRIM
(SINGLE)**
W: 8.0"
H: 8.0"
1.25" Thick
4.25" x 2.25" Opening



SNOWPEAK
Dressed



IRON
Dressed



SHADOW
Dressed



BURLAP
Dressed



BLACKTEA
Dressed



Front Cover Image:
WHITEGOLD Orchard Limestone
@arrowcreeklodge
@taradunnphotography

WWW.CREATIVEMINES.COM | (800) 453-7040

Disclaimer: Creative Mines Stone and Masonry Veneer is hand-designed and handcrafted. It looks like the real thing, so natural variations in color are expected and celebrated characteristics. It is recommended to request samples prior to ordering. Product specifications listed are averages and individual product may vary in dimension and weight while maintaining accordance with ASTM specifications. Please refer to www.creativemines.com for detailed specifications, ASTM testing results, installation instructions and a list of authorized dealers and distributors.